

**ASSOCIATED STUDENTS  
UCLA**

**FINANCIAL STATEMENTS  
SERVICES AND ENTERPRISES**

**June (05/23/21 - 06/26/21)**

**Prepared  
July 14, 2021**

# **ASSOCIATED STUDENTS UCLA SERVICES AND ENTERPRISES**

## **TABLE OF CONTENTS**

Income and Loss Summary Statements –  
Divisions at Contribution Level

Income and Loss Summary Statements –  
Divisions Fully Allocated

Actual to Projection Variances

Balance Sheet

Statement of Cash Flows

Cash Reserve Computation

Capital Expenditures

Accounts Receivable Aging Report

Aged Accounts Balances Graph

Past Due Accounts Balances Graph

Store Inventory at Cost

Store Inventory Turns

UCLA Store Operations Operating Summary Statement

UCLA Restaurants Operating Summary Statement

Services Division Operating Summary Statement

Student Support/Union Operating Summary Statement

Administrative & Support Services Operating Summary Statement

Maintenance Operating Summary Statement

Utilities Operating Summary Statement

**ASSOCIATED STUDENTS UCLA - SERVICES AND ENTERPRISES  
INCOME AND LOSS SUMMARY - JUNE 2021 (\$000's)  
DIVISIONS AT CONTRIBUTION LEVEL**

| JUNE (05/23/21 - 06/26/21) |                |             |              | FY 19-20       |                |                             | FISCAL YEAR 2020-2021               |                |                 |                | FY 19-20       |                |
|----------------------------|----------------|-------------|--------------|----------------|----------------|-----------------------------|-------------------------------------|----------------|-----------------|----------------|----------------|----------------|
| CURRENT MONTH              |                |             |              | **             |                |                             | YTD 11 MONTHS (07/26/20 - 06/26/21) |                |                 |                | **             |                |
| ACTUAL                     |                | VARIANCE    |              | LAST YEAR ACT  |                |                             | ACTUAL                              |                | VARIANCE        |                | LAST YEAR ACT  |                |
| \$                         | %              | \$          | %            | \$             | %              |                             | \$                                  | %              | \$              | %              | \$             | %              |
| 3,417                      |                | 298         | 9.6%         | 3,119          |                | <b>GROSS INCOME</b>         |                                     |                |                 |                |                |                |
| 179                        |                | 225         | (489.1%)     | (46)           |                | UCLA Store                  | 23,973                              |                | (11,768)        | (32.9%)        | 35,741         |                |
| 337                        |                | 120         | 55.3%        | 217            |                | UCLA Restaurants            | 1,024                               |                | (9,959)         | (90.7%)        | 10,983         |                |
| 54                         |                | 55          | (5500.0%)    | (1)            |                | Licensing & Services        | 3,560                               |                | (609)           | (14.6%)        | 4,169          |                |
|                            |                |             |              |                |                | UCLA Student Union          | 407                                 |                | (443)           | (52.1%)        | 850            |                |
| <b>3,987</b>               |                | <b>698</b>  | <b>21.2%</b> | <b>3,289</b>   |                | <b>TOTAL</b>                | <b>28,964</b>                       |                | <b>(22,779)</b> | <b>(44.0%)</b> | <b>51,743</b>  |                |
|                            |                |             |              |                |                | <b>GROSS MARGIN</b>         |                                     |                |                 |                |                |                |
| 1,094                      | 32.0%          | 238         | Pts. 4.6     | 856            | 27.4%          | UCLA Store                  | 6,338                               | 26.4%          | (4,626)         | (4.3)          | 10,964         | 30.7%          |
| 112                        | 62.6%          | 159         | (39.6)       | (47)           | 102.2%         | UCLA Restaurants            | 759                                 | 74.1%          | (6,892)         | 4.4            | 7,651          | 69.7%          |
| 337                        | 100.0%         | 120         | 0.0          | 217            | 100.0%         | Licensing & Services        | 3,559                               | 100.0%         | (609)           | 0.0            | 4,168          | 100.0%         |
| 28                         | 51.9%          | 30          | (148.1)      | (2)            | 200.0%         | UCLA Student Union          | 342                                 | 84.0%          | (184)           | 22.1           | 526            | 61.9%          |
| <b>1,571</b>               | <b>39.4%</b>   | <b>547</b>  | <b>8.3</b>   | <b>1,024</b>   | <b>31.1%</b>   | <b>TOTAL</b>                | <b>10,998</b>                       | <b>38.0%</b>   | <b>(12,311)</b> | <b>(7.0)</b>   | <b>23,309</b>  | <b>45.0%</b>   |
|                            |                |             |              |                |                | <b>WAGES &amp; BENEFITS</b> |                                     |                |                 |                |                |                |
| 509                        | 14.9%          | (32)        | 0.4          | 477            | 15.3%          | UCLA Store                  | 5,263                               | 22.0%          | 1,130           | (4.1)          | 6,393          | 17.9%          |
| 549                        | 306.7%         | (78)        | (1,330.6)    | 471            | (1023.9%)      | UCLA Restaurants            | 5,204                               | 508.2%         | 2,719           | (436.1)        | 7,923          | 72.1%          |
| 70                         | 20.8%          | 2           | 12.4         | 72             | 33.2%          | Licensing & Services        | 777                                 | 21.8%          | 16              | (2.8)          | 793            | 19.0%          |
| 47                         | 87.0%          | 13          | (6,087.0)    | 60             | (6000.0%)      | UCLA Student Union          | 658                                 | 161.7%         | 172             | (64.1)         | 830            | 97.6%          |
| <b>1,175</b>               | <b>29.5%</b>   | <b>(95)</b> | <b>3.3</b>   | <b>1,080</b>   | <b>32.8%</b>   | <b>TOTAL</b>                | <b>11,902</b>                       | <b>41.1%</b>   | <b>4,037</b>    | <b>(10.3)</b>  | <b>15,939</b>  | <b>30.8%</b>   |
|                            |                |             |              |                |                | <b>OTHER CONTROLLABLES</b>  |                                     |                |                 |                |                |                |
| 200                        | 5.9%           | (11)        | 0.2          | 189            | 6.1%           | UCLA Store                  | 1,733                               | 7.2%           | 337             | (1.4)          | 2,070          | 5.8%           |
| 39                         | 21.8%          | 26          | (163.1)      | 65             | (141.3%)       | UCLA Restaurants            | 206                                 | 20.1%          | 1,082           | (8.4)          | 1,288          | 11.7%          |
| 92                         | 27.3%          | (64)        | (14.4)       | 28             | 12.9%          | Licensing & Services        | 1,003                               | 28.2%          | (437)           | (14.6)         | 566            | 13.6%          |
| 17                         | 31.5%          | 3           | (2,031.5)    | 20             | (2000.0%)      | UCLA Student Union          | 177                                 | 43.5%          | 327             | 15.8           | 504            | 59.3%          |
| <b>348</b>                 | <b>8.7%</b>    | <b>(46)</b> | <b>0.5</b>   | <b>302</b>     | <b>9.2%</b>    | <b>TOTAL</b>                | <b>3,119</b>                        | <b>10.8%</b>   | <b>1,309</b>    | <b>(2.2)</b>   | <b>4,428</b>   | <b>8.6%</b>    |
|                            |                |             |              |                |                | <b>CONTRIBUTION</b>         |                                     |                |                 |                |                |                |
| 385                        | 11.3%          | 195         | 5.2          | 190            | 6.1%           | UCLA Store                  | (658)                               | (2.7%)         | (3,160)         | (9.7)          | 2,502          | 7.0%           |
| (476)                      | (265.9%)       | 106         | (1,531.1)    | (582)          | 1265.2%        | UCLA Restaurants            | (4,651)                             | (454.2%)       | (3,091)         | (440.0)        | (1,560)        | (14.2%)        |
| 175                        | 51.9%          | 58          | (2.0)        | 117            | 53.9%          | Licensing & Services        | 1,780                               | 50.0%          | (1,028)         | (17.4)         | 2,808          | 67.4%          |
| (36)                       | (66.7%)        | 46          | (8,266.7)    | (82)           | 8200.0%        | UCLA Student Union          | (493)                               | (121.1%)       | 315             | (26.0)         | (808)          | (95.1%)        |
| <b>48</b>                  | <b>1.2%</b>    | <b>405</b>  | <b>12.1</b>  | <b>(357)</b>   | <b>(10.9%)</b> | <b>TOTAL</b>                | <b>(4,022)</b>                      | <b>(13.9%)</b> | <b>(6,964)</b>  | <b>(19.6)</b>  | <b>2,942</b>   | <b>5.7%</b>    |
|                            |                |             |              |                |                | <b>ALLOCATED EXPENSES</b>   |                                     |                |                 |                |                |                |
| 668                        | 16.8%          | (49)        | 2.0          | 619            | 18.8%          | Admin&Support Services      | 7,010                               | 24.2%          | 137             | (10.4)         | 7,147          | 13.8%          |
| 282                        | 7.1%           | (47)        | 0.0          | 235            | 7.1%           | Facilities                  | 2,752                               | 9.5%           | 106             | (4.0)          | 2,858          | 5.5%           |
| 35                         | 0.9%           | 11          | 0.5          | 46             | 1.4%           | Utilities                   | 391                                 | 1.3%           | 239             | (0.1)          | 630            | 1.2%           |
| 170                        | 4.3%           | 16          | 1.4          | 186            | 5.7%           | Depreciation                | 1,968                               | 6.8%           | 200             | (2.6)          | 2,168          | 4.2%           |
| <b>1,155</b>               | <b>29.0%</b>   | <b>(69)</b> | <b>4.0</b>   | <b>1,086</b>   | <b>33.0%</b>   | <b>TOTAL</b>                | <b>12,121</b>                       | <b>41.8%</b>   | <b>682</b>      | <b>(17.1)</b>  | <b>12,803</b>  | <b>24.7%</b>   |
|                            |                |             |              |                |                | <b>NET INCOME (LOSS)</b>    |                                     |                |                 |                |                |                |
| (1,107)                    | (27.8%)        | 336         | 16.1         | (1,443)        | (43.9%)        | <b>FROM OPERATIONS</b>      | (16,143)                            | (55.7%)        | (6,282)         | (36.6)         | (9,861)        | (19.1%)        |
|                            |                |             |              |                |                | <b>OTHER INC/(EXP)</b>      |                                     |                |                 |                |                |                |
| 4                          | 0.1%           | 2           | 0.0          | 2              | 0.1%           | Non-Recurrent Inc/(Exp)     | 4,789                               | 16.5%          | 4,517           | 16.0           | 272            | 0.5%           |
| 8                          | 0.2%           | (3)         | (0.1)        | 11             | 0.3%           | Interest Income             | 133                                 | 0.5%           | (63)            | 0.1            | 196            | 0.4%           |
| (22)                       | (0.6%)         | 4           | 0.2          | (26)           | (0.8%)         | Interest (Expense)          | (240)                               | (0.8%)         | 41              | (0.3)          | (281)          | (0.5%)         |
| 0                          | 0.0%           | 0           | 0.0          | 0              | 0.0%           | Income Taxes                | 0                                   | 0.0%           | 0               | 0.0            | 0              | 0.0%           |
| 230                        | 5.8%           | (8)         | (1.4)        | 238            | 7.2%           | Student Union Fee Income    | 2,683                               | 9.3%           | (40)            | 4.0            | 2,723          | 5.3%           |
| <b>220</b>                 | <b>5.5%</b>    | <b>(5)</b>  | <b>(1.3)</b> | <b>225</b>     | <b>6.8%</b>    | <b>TOTAL</b>                | <b>7,365</b>                        | <b>25.4%</b>   | <b>4,455</b>    | <b>19.8</b>    | <b>2,910</b>   | <b>5.6%</b>    |
| <b>(887)</b>               | <b>(22.2%)</b> | <b>331</b>  | <b>14.8</b>  | <b>(1,218)</b> | <b>(37.0%)</b> | <b>NET INCOME (LOSS)</b>    | <b>(8,778)</b>                      | <b>(30.3%)</b> | <b>(1,827)</b>  | <b>(16.9)</b>  | <b>(6,951)</b> | <b>(13.4%)</b> |

Due to the unprecedented nature of operations and the ongoing flux resulting from the COVID-19 pandemic, the FY 2019-2020 adopted Budget is used as a reference for FY 2020-2021. Please note that the adopted FY 2019-2020 Budget/FY 2020-2021 Budget does not reflect projections for the actuals for FY 2020-2021. In terms of comparison, budgetary deviations or previous year deviations should be considered in the context of the COVID 19 pandemic.

**ASSOCIATED STUDENTS UCLA - SERVICES AND ENTERPRISES  
INCOME AND LOSS SUMMARY - JUNE 2021 (\$000's)  
DIVISIONS FULLY ALLOCATED**

| JUNE (05/23/21 - 06/26/21)               |                |              |              | FY 19-20       |                | FISCAL YEAR 2020-2021               |                |                 |                | FY 19-20       |                |
|--|----------------|--------------|--------------|----------------|----------------|-------------------------------------|----------------|-----------------|----------------|----------------|----------------|
| CURRENT MONTH                            |                |              |              | **             |                | YTD 11 MONTHS (07/26/20 - 06/26/21) |                |                 |                | **             |                |
| ACTUAL                                   |                | VARIANCE     |              | LAST YEAR ACT  |                | ACTUAL                              |                | VARIANCE        |                | LAST YEAR ACT  |                |
|  |                | ACT/LY ACT   |              |                |                |                                     |                | ACT/LY ACT      |                |                |                |
| \$                                       | %              | \$           | %            | \$             | %              | \$                                  | %              | \$              | %              | \$             | %              |
| <b>GROSS INCOME</b>                      |                |              |              |                |                |                                     |                |                 |                |                |                |
| 3,417                                    |                | 298          | 9.6%         | 3,119          |                | 23,973                              |                | (11,768)        | (32.9%)        | 35,741         |                |
| 179                                      |                | 225          | (489.1%)     | (46)           |                | 1,024                               |                | (9,959)         | (90.7%)        | 10,983         |                |
| 337                                      |                | 120          | 55.3%        | 217            |                | 3,560                               |                | (609)           | (14.6%)        | 4,169          |                |
| 54                                       |                | 55           | (5500.0%)    | (1)            |                | 407                                 |                | (443)           | (52.1%)        | 850            |                |
| <b>3,987</b>                             |                | <b>698</b>   | <b>21.2%</b> | <b>3,289</b>   |                | <b>28,964</b>                       |                | <b>(22,779)</b> | <b>(44.0%)</b> | <b>51,743</b>  |                |
| <b>GROSS MARGIN</b>                      |                |              |              |                |                |                                     |                |                 |                |                |                |
| 1,094                                    | 32.0%          | 238          | Pts. 4.6     | 856            | 27.4%          | 6,338                               | 26.4%          | (4,626)         | Pts. (4.3)     | 10,964         | 30.7%          |
| 112                                      | 62.6%          | 159          | (39.6)       | (47)           | 102.2%         | 759                                 | 74.1%          | (6,892)         | 4.4            | 7,651          | 69.7%          |
| 337                                      | 100.0%         | 120          | 0.0          | 217            | 100.0%         | 3,559                               | 100.0%         | (609)           | 0.0            | 4,168          | 100.0%         |
| 28                                       | 51.9%          | 30           | (148.1)      | (2)            | 200.0%         | 342                                 | 84.0%          | (184)           | 22.1           | 526            | 61.9%          |
| <b>1,571</b>                             | <b>39.4%</b>   | <b>547</b>   | <b>8.3</b>   | <b>1,024</b>   | <b>31.1%</b>   | <b>10,998</b>                       | <b>38.0%</b>   | <b>(12,311)</b> | <b>(7.0)</b>   | <b>23,309</b>  | <b>45.0%</b>   |
| <b>TOTAL CONTROLLABLES</b>               |                |              |              |                |                |                                     |                |                 |                |                |                |
| 708                                      | 20.7%          | (42)         | 0.7          | 666            | 21.4%          | 6,996                               | 29.2%          | 1,467           | (5.5)          | 8,463          | 23.7%          |
| 588                                      | 328.5%         | (53)         | (1,491.5)    | 535            | (1163.0%)      | 5,410                               | 528.3%         | 3,801           | (444.4)        | 9,211          | 83.9%          |
| 162                                      | 48.1%          | (62)         | (2.0)        | 100            | 46.1%          | 1,779                               | 50.0%          | (420)           | (17.4)         | 1,359          | 32.6%          |
| 64                                       | 118.5%         | 16           | (8,118.5)    | 80             | (8000.0%)      | 836                                 | 205.4%         | 498             | (48.5)         | 1,334          | 156.9%         |
| <b>1,522</b>                             | <b>38.2%</b>   | <b>(141)</b> | <b>3.8</b>   | <b>1,381</b>   | <b>42.0%</b>   | <b>15,021</b>                       | <b>51.9%</b>   | <b>5,346</b>    | <b>(12.5)</b>  | <b>20,367</b>  | <b>39.4%</b>   |
| <b>CONTRIBUTION</b>                      |                |              |              |                |                |                                     |                |                 |                |                |                |
| 385                                      | 11.3%          | 195          | 5.2          | 190            | 6.1%           | (658)                               | (2.7%)         | (3,160)         | (9.7)          | 2,502          | 7.0%           |
| (476)                                    | (265.9%)       | 106          | (1,531.1)    | (582)          | 1265.2%        | (4,651)                             | (454.2%)       | (3,091)         | (440.0)        | (1,560)        | (14.2%)        |
| 175                                      | 51.9%          | 58           | (2.0)        | 117            | 53.9%          | 1,780                               | 50.0%          | (1,028)         | (17.4)         | 2,808          | 67.4%          |
| (36)                                     | (66.7%)        | 46           | (8,266.7)    | (82)           | 8200.0%        | (493)                               | (121.1%)       | 315             | (26.0)         | (808)          | (95.1%)        |
| <b>48</b>                                | <b>1.2%</b>    | <b>405</b>   | <b>12.1</b>  | <b>(357)</b>   | <b>(10.9%)</b> | <b>(4,022)</b>                      | <b>(13.9%)</b> | <b>(6,964)</b>  | <b>(19.6)</b>  | <b>2,942</b>   | <b>5.7%</b>    |
| <b>ALLOCATED EXPENSES</b>                |                |              |              |                |                |                                     |                |                 |                |                |                |
| 737                                      | 21.6%          | 4            | 2.2          | 741            | 23.8%          | 7,472                               | 31.2%          | (465)           | (11.6)         | 7,007          | 19.6%          |
| 215                                      | 120.1%         | (42)         | (496.2)      | 173            | (376.1%)       | 2,178                               | 212.7%         | 1,349           | (180.6)        | 3,527          | 32.1%          |
| 109                                      | 32.3%          | (19)         | 9.2          | 90             | 41.5%          | 1,463                               | 41.1%          | (260)           | (12.2)         | 1,203          | 28.9%          |
| 94                                       | 174.1%         | (12)         | (8,374.1)    | 82             | (8200.0%)      | 1,008                               | 247.7%         | 58              | (122.3)        | 1,066          | 125.4%         |
| <b>1,155</b>                             | <b>29.0%</b>   | <b>(69)</b>  | <b>4.0</b>   | <b>1,086</b>   | <b>33.0%</b>   | <b>12,121</b>                       | <b>41.8%</b>   | <b>682</b>      | <b>(17.1)</b>  | <b>12,803</b>  | <b>24.7%</b>   |
| <b>NET INCOME (LOSS) FROM OPERATIONS</b> |                |              |              |                |                |                                     |                |                 |                |                |                |
| (352)                                    | (8.8%)         | 198          | 7.9          | (550)          | (16.7%)        | (8,130)                             | (28.1%)        | (3,625)         | (19.4)         | (4,505)        | (8.7%)         |
| (691)                                    | (17.3%)        | 64           | 5.7          | (755)          | (23.0%)        | (6,829)                             | (23.6%)        | (1,742)         | (13.8)         | (5,087)        | (9.8%)         |
| 66                                       | 1.7%           | 39           | 0.9          | 27             | 0.8%           | 317                                 | 1.1%           | (1,288)         | (2.0)          | 1,605          | 3.1%           |
| (130)                                    | (3.3%)         | 35           | 1.7          | (165)          | (5.0%)         | (1,501)                             | (5.2%)         | 373             | (1.6)          | (1,874)        | (3.6%)         |
| <b>(1,107)</b>                           | <b>(27.8%)</b> | <b>336</b>   | <b>16.1</b>  | <b>(1,443)</b> | <b>(43.9%)</b> | <b>(16,143)</b>                     | <b>(55.7%)</b> | <b>(6,282)</b>  | <b>(36.6)</b>  | <b>(9,861)</b> | <b>(19.1%)</b> |
| <b>OTHER INC/(EXP)</b>                   |                |              |              |                |                |                                     |                |                 |                |                |                |
| 4  | 0.1%           | 2            | 0.0          | 2              | 0.1%           | 4,789                               | 16.5%          | 4,517           | 16.0           | 272            | 0.5%           |
| 8  | 0.2%           | (3)          | (0.1)        | 11             | 0.3%           | 133                                 | 0.5%           | (63)            | 0.1            | 196            | 0.4%           |
| (22)                                     | (0.6%)         | 4            | 0.2          | (26)           | (0.8%)         | (240)                               | (0.8%)         | 41              | (0.3)          | (281)          | (0.5%)         |
| 0  | 0.0%           | 0            | 0.0          | 0              | 0.0%           | 0                                   | 0.0%           | 0               | 0.0            | 0              | 0.0%           |
| 230                                      | 5.8%           | (8)          | (1.4)        | 238            | 7.2%           | 2,683                               | 9.3%           | (40)            | 4.0            | 2,723          | 5.3%           |
| <b>220</b>                               | <b>5.5%</b>    | <b>(5)</b>   | <b>(1.3)</b> | <b>225</b>     | <b>6.8%</b>    | <b>7,365</b>                        | <b>25.4%</b>   | <b>4,455</b>    | <b>19.8</b>    | <b>2,910</b>   | <b>5.6%</b>    |
| <b>(887)</b>                             | <b>(22.2%)</b> | <b>331</b>   | <b>14.8</b>  | <b>(1,218)</b> | <b>(37.0%)</b> | <b>(8,778)</b>                      | <b>(30.3%)</b> | <b>(1,827)</b>  | <b>(16.9)</b>  | <b>(6,951)</b> | <b>(13.4%)</b> |

Due to the unprecedented nature of operations and the ongoing flux resulting from the COVID-19 pandemic, the FY 2019-2020 adopted Budget is used as a reference for FY 2020-2021. Please note that the adopted FY 2019-2020 Budget/FY 2020-2021 Budget does not reflect projections for the actuals for FY 2020-2021. In terms of comparison, budgetary deviations or previous year deviations should be considered in the context of the COVID 19 pandemic.

**ASSOCIATED STUDENTS UCLA - SERVICES AND ENTERPRISES  
INCOME AND LOSS SUMMARY - JUNE 2021 (\$000's)  
DIVISIONS AT CONTRIBUTION LEVEL**

| JUNE (05/23/21 - 06/26/21)               |                |              |               |                |                |             |              |                |                | FY 19-20                          |                | FISCAL YEAR 2020-2021               |               |                 |                |                 |                |                |                |               |   | FY 19-20 |         |
|--|----------------|--------------|---------------|----------------|----------------|-------------|--------------|----------------|----------------|-----------------------------------|----------------|-------------------------------------|---------------|-----------------|----------------|-----------------|----------------|----------------|----------------|---------------|---|----------|---------|
| CURRENT MONTH                            |                |              |               |                |                |             |              |                |                | **                                |                | YTD 11 MONTHS (07/26/20 - 06/26/21) |               |                 |                |                 |                |                |                |               |   | **       |         |
| ACTUAL                                   |                | BUDGET       |               | VARIANCE       |                |             |              | LAST YEAR ACT  |                |                                   |                | ACTUAL                              |               | BUDGET          |                | VARIANCE        |                |                |                | LAST YEAR ACT |   |          |         |
| \$                                       | %              | \$           | %             | \$             | %              | \$          | %            | \$             | %              | \$                                | %              | \$                                  | %             | \$              | %              | \$              | %              | \$             | %              | \$            | % |          |         |
|  |                |              |               | ACT/BUD        |                | ACT/LY ACT  |              |                |                |                                   |                |                                     |               |                 |                | ACT/BUD         |                | ACT/LY ACT     |                |               |   |          |         |
|  |                |              |               | \$             | %              | \$          | %            | \$             | %              | \$                                | %              | \$                                  | %             | \$              | %              | \$              | %              | \$             | %              | \$            | % |          |         |
| <b>GROSS INCOME</b>                      |                |              |               |                |                |             |              |                |                |                                   |                |                                     |               |                 |                |                 |                |                |                |               |   |          |         |
| 3,417                                    |                | 4,064        |               | (647)          | (15.9%)        | 298         | 9.6%         | 3,119          |                | <b>UCLA Store</b>                 |                |                                     |               |                 |                |                 |                |                |                |               |   | 35,741   |         |
| 179                                      |                | 1,750        |               | (1,571)        | (89.8%)        | 225         | (489.1%)     | (46)           |                | <b>UCLA Restaurants</b>           |                |                                     |               |                 |                |                 |                |                |                |               |   | 10,983   |         |
| 337                                      |                | 318          |               | 19             | 6.0%           | 120         | 55.3%        | 217            |                | <b>Licensing &amp; Services</b>   |                |                                     |               |                 |                |                 |                |                |                |               |   | 4,169    |         |
| 54                                       |                | 161          |               | (107)          | (66.5%)        | 55          | (5500.0%)    | (1)            |                | <b>UCLA Student Union</b>         |                |                                     |               |                 |                |                 |                |                |                |               |   | 850      |         |
| <b>3,987</b>                             |                | <b>6,293</b> |               | <b>(2,306)</b> | <b>(36.6%)</b> | <b>698</b>  | <b>21.2%</b> | <b>3,289</b>   |                | <b>28,964</b>                     |                | <b>68,703</b>                       |               | <b>(39,739)</b> | <b>(57.8%)</b> | <b>(22,779)</b> | <b>(44.0%)</b> | <b>51,743</b>  |                |               |   |          |         |
| <b>GROSS MARGIN</b>                      |                |              |               |                |                |             |              |                |                |                                   |                |                                     |               |                 |                |                 |                |                |                |               |   |          |         |
| 1,094                                    | 32.0%          | 1,464        | 36.0%         | (370)          | Pts. (4.0)     | 238         | Pts. 4.6     | 856            | 27.4%          | <b>UCLA Store</b>                 |                |                                     |               |                 |                |                 |                |                |                |               |   | 10,964   | 30.7%   |
| 112                                      | 62.6%          | 1,238        | 70.7%         | (1,126)        | (8.1)          | 159         | (39.6)       | (47)           | 102.2%         | <b>UCLA Restaurants</b>           |                |                                     |               |                 |                |                 |                |                |                |               |   | 7,651    | 69.7%   |
| 337                                      | 100.0%         | 318          | 100.0%        | 19             | 0.0            | 120         | 0.0          | 217            | 100.0%         | <b>Licensing &amp; Services</b>   |                |                                     |               |                 |                |                 |                |                |                |               |   | 4,168    | 100.0%  |
| 28                                       | 51.9%          | 98           | 60.9%         | (70)           | (9.0)          | 30          | (148.1)      | (2)            | 200.0%         | <b>UCLA Student Union</b>         |                |                                     |               |                 |                |                 |                |                |                |               |   | 526      | 61.9%   |
| <b>1,571</b>                             | <b>39.4%</b>   | <b>3,118</b> | <b>49.5%</b>  | <b>(1,547)</b> | <b>(10.1)</b>  | <b>547</b>  | <b>8.3</b>   | <b>1,024</b>   | <b>31.1%</b>   | <b>10,998</b>                     | <b>38.0%</b>   | <b>33,930</b>                       | <b>49.4%</b>  | <b>(22,932)</b> | <b>(11.4)</b>  | <b>(12,311)</b> | <b>(7.0)</b>   | <b>23,309</b>  | <b>45.0%</b>   |               |   |          |         |
| <b>WAGES &amp; BENEFITS</b>              |                |              |               |                |                |             |              |                |                |                                   |                |                                     |               |                 |                |                 |                |                |                |               |   |          |         |
| 509                                      | 14.9%          | 661          | 16.3%         | 152            | 1.4            | (32)        | 0.4          | 477            | 15.3%          | <b>UCLA Store</b>                 |                |                                     |               |                 |                |                 |                |                |                |               |   | 6,393    | 17.9%   |
| 549                                      | 306.7%         | 890          | 50.9%         | 341            | (255.8)        | (78)        | (1,330.6)    | 471            | (1023.9%)      | <b>UCLA Restaurants</b>           |                |                                     |               |                 |                |                 |                |                |                |               |   | 7,923    | 72.1%   |
| 70                                       | 20.8%          | 74           | 23.3%         | 4              | 2.5            | 2           | 12.4         | 72             | 33.2%          | <b>Licensing &amp; Services</b>   |                |                                     |               |                 |                |                 |                |                |                |               |   | 793      | 19.0%   |
| 47                                       | 87.0%          | 79           | 49.1%         | 32             | (37.9)         | 13          | (6,087.0)    | 60             | (6000.0%)      | <b>UCLA Student Union</b>         |                |                                     |               |                 |                |                 |                |                |                |               |   | 830      | 97.6%   |
| <b>1,175</b>                             | <b>29.5%</b>   | <b>1,704</b> | <b>27.1%</b>  | <b>529</b>     | <b>(2.4)</b>   | <b>(95)</b> | <b>3.3</b>   | <b>1,080</b>   | <b>32.8%</b>   | <b>11,902</b>                     | <b>41.1%</b>   | <b>17,662</b>                       | <b>25.7%</b>  | <b>5,760</b>    | <b>(15.4)</b>  | <b>4,037</b>    | <b>(10.3)</b>  | <b>15,939</b>  | <b>30.8%</b>   |               |   |          |         |
| <b>OTHER CONTROLLABLES</b>               |                |              |               |                |                |             |              |                |                |                                   |                |                                     |               |                 |                |                 |                |                |                |               |   |          |         |
| 200                                      | 5.9%           | 148          | 3.6%          | (52)           | (2.3)          | (11)        | 0.2          | 189            | 6.1%           | <b>UCLA Store</b>                 |                |                                     |               |                 |                |                 |                |                |                |               |   | 2,070    | 5.8%    |
| 39                                       | 21.8%          | 163          | 9.3%          | 124            | (12.5)         | 26          | (163.1)      | 65             | (141.3%)       | <b>UCLA Restaurants</b>           |                |                                     |               |                 |                |                 |                |                |                |               |   | 1,288    | 11.7%   |
| 92                                       | 27.3%          | 65           | 20.4%         | (27)           | (6.9)          | (64)        | (14.4)       | 28             | 12.9%          | <b>Licensing &amp; Services</b>   |                |                                     |               |                 |                |                 |                |                |                |               |   | 566      | 13.6%   |
| 17                                       | 31.5%          | 60           | 37.3%         | 43             | 5.8            | 3           | (2,031.5)    | 20             | (2000.0%)      | <b>UCLA Student Union</b>         |                |                                     |               |                 |                |                 |                |                |                |               |   | 504      | 59.3%   |
| <b>348</b>                               | <b>8.7%</b>    | <b>436</b>   | <b>6.9%</b>   | <b>88</b>      | <b>(1.8)</b>   | <b>(46)</b> | <b>0.5</b>   | <b>302</b>     | <b>9.2%</b>    | <b>3,119</b>                      | <b>10.8%</b>   | <b>6,308</b>                        | <b>9.2%</b>   | <b>3,189</b>    | <b>(1.6)</b>   | <b>1,309</b>    | <b>(2.2)</b>   | <b>4,428</b>   | <b>8.6%</b>    |               |   |          |         |
| <b>CONTRIBUTION</b>                      |                |              |               |                |                |             |              |                |                |                                   |                |                                     |               |                 |                |                 |                |                |                |               |   |          |         |
| 385                                      | 11.3%          | 655          | 16.1%         | (270)          | (4.8)          | 195         | 5.2          | 190            | 6.1%           | <b>UCLA Store</b>                 |                |                                     |               |                 |                |                 |                |                |                |               |   | 2,502    | 7.0%    |
| (476)                                    | (265.9%)       | 185          | 10.6%         | (661)          | (276.5)        | 106         | (1,531.1)    | (582)          | 1265.2%        | <b>UCLA Restaurants</b>           |                |                                     |               |                 |                |                 |                |                |                |               |   | (1,560)  | (14.2%) |
| 175                                      | 51.9%          | 179          | 56.3%         | (4)            | (4.4)          | 58          | (2.0)        | 117            | 53.9%          | <b>Licensing &amp; Services</b>   |                |                                     |               |                 |                |                 |                |                |                |               |   | 2,808    | 67.4%   |
| (36)                                     | (66.7%)        | (41)         | (25.5%)       | 5              | (41.2)         | 46          | (8,266.7)    | (82)           | 8200.0%        | <b>UCLA Student Union</b>         |                |                                     |               |                 |                |                 |                |                |                |               |   | (808)    | (95.1%) |
| <b>48</b>                                | <b>1.2%</b>    | <b>978</b>   | <b>15.5%</b>  | <b>(930)</b>   | <b>(14.3)</b>  | <b>405</b>  | <b>12.1</b>  | <b>(357)</b>   | <b>(10.9%)</b> | <b>(4,022)</b>                    | <b>(13.9%)</b> | <b>9,960</b>                        | <b>14.5%</b>  | <b>(13,982)</b> | <b>(28.4)</b>  | <b>(6,964)</b>  | <b>(19.6)</b>  | <b>2,942</b>   | <b>5.7%</b>    |               |   |          |         |
| <b>ALLOCATED EXPENSES</b>                |                |              |               |                |                |             |              |                |                |                                   |                |                                     |               |                 |                |                 |                |                |                |               |   |          |         |
| 668                                      | 16.8%          | 669          | 10.6%         | 1              | (6.2)          | (49)        | 2.0          | 619            | 18.8%          | <b>Admin&amp;Support Services</b> |                |                                     |               |                 |                |                 |                |                |                |               |   | 7,147    | 13.8%   |
| 282                                      | 7.1%           | 282          | 4.5%          | 0              | (2.6)          | (47)        | 0.0          | 235            | 7.1%           | <b>Facilities</b>                 |                |                                     |               |                 |                |                 |                |                |                |               |   | 2,858    | 5.5%    |
| 35                                       | 0.9%           | 78           | 1.2%          | 43             | 0.3            | 11          | 0.5          | 46             | 1.4%           | <b>Utilities</b>                  |                |                                     |               |                 |                |                 |                |                |                |               |   | 630      | 1.2%    |
| 170                                      | 4.3%           | 223          | 3.5%          | 53             | (0.8)          | 16          | 1.4          | 186            | 5.7%           | <b>Depreciation</b>               |                |                                     |               |                 |                |                 |                |                |                |               |   | 2,168    | 4.2%    |
| <b>1,155</b>                             | <b>29.0%</b>   | <b>1,252</b> | <b>19.9%</b>  | <b>97</b>      | <b>(9.1)</b>   | <b>(69)</b> | <b>4.0</b>   | <b>1,086</b>   | <b>33.0%</b>   | <b>12,121</b>                     | <b>41.8%</b>   | <b>13,513</b>                       | <b>19.7%</b>  | <b>1,392</b>    | <b>(22.1)</b>  | <b>682</b>      | <b>(17.1)</b>  | <b>12,803</b>  | <b>24.7%</b>   |               |   |          |         |
| <b>NET INCOME (LOSS) FROM OPERATIONS</b> |                |              |               |                |                |             |              |                |                |                                   |                |                                     |               |                 |                |                 |                |                |                |               |   |          |         |
| (1,107)                                  | (27.8%)        | (274)        | (4.4%)        | (833)          | (23.4)         | 336         | 16.1         | (1,443)        | (43.9%)        | (16,143)                          | (55.7%)        | (3,553)                             | (5.2%)        | (12,590)        | (50.5)         | (6,282)         | (36.6)         | (9,861)        | (19.1%)        |               |   |          |         |
| <b>OTHER INC/(EXP)</b>                   |                |              |               |                |                |             |              |                |                |                                   |                |                                     |               |                 |                |                 |                |                |                |               |   |          |         |
| 4  | 0.1%           | 2            | 0.0%          | 2              | 0.1            | 2           | 0.0          | 2              | 0.1%           | <b>Non-Recurrent Inc/(Exp)</b>    |                |                                     |               |                 |                |                 |                |                |                |               |   | 272      | 0.5%    |
| 8  | 0.2%           | 18           | 0.3%          | (10)           | (0.1)          | (3)         | (0.1)        | 11             | 0.3%           | <b>Interest Income</b>            |                |                                     |               |                 |                |                 |                |                |                |               |   | 196      | 0.4%    |
| (22)                                     | (0.6%)         | (26)         | (0.4%)        | 4              | (0.2)          | 4           | 0.2          | (26)           | (0.8%)         | <b>Interest (Expense)</b>         |                |                                     |               |                 |                |                 |                |                |                |               |   | (281)    | (0.5%)  |
| 0  | 0.0%           | (2)          | 0.0%          | 2              | 0.0            | 0           | 0.0          | 0              | 0.0%           | <b>Income Taxes</b>               |                |                                     |               |                 |                |                 |                |                |                |               |   | 0        | 0.0%    |
| 230                                      | 5.8%           | 248          | 3.9%          | (18)           | 1.9            | (8)         | (1.4)        | 238            | 7.2%           | <b>Student Union Fee Income</b>   |                |                                     |               |                 |                |                 |                |                |                |               |   | 2,723    | 5.3%    |
| <b>220</b>                               | <b>5.5%</b>    | <b>240</b>   | <b>3.8%</b>   | <b>(20)</b>    | <b>1.7</b>     | <b>(5)</b>  | <b>(1.3)</b> | <b>225</b>     | <b>6.8%</b>    | <b>7,365</b>                      | <b>25.4%</b>   | <b>2,669</b>                        | <b>3.9%</b>   | <b>4,696</b>    | <b>21.5</b>    | <b>4,455</b>    | <b>19.8</b>    | <b>2,910</b>   | <b>5.6%</b>    |               |   |          |         |
| <b>(887)</b>                             | <b>(22.2%)</b> | <b>(34)</b>  | <b>(0.5%)</b> | <b>(853)</b>   | <b>(21.7)</b>  | <b>331</b>  | <b>14.8</b>  | <b>(1,218)</b> | <b>(37.0%)</b> | <b>(8,778)</b>                    | <b>(30.3%)</b> | <b>(884)</b>                        | <b>(1.3%)</b> | <b>(7,894)</b>  | <b>(29.0)</b>  | <b>(1,827)</b>  | <b>(16.9)</b>  | <b>(6,951)</b> | <b>(13.4%)</b> |               |   |          |         |

Due to the unprecedented nature of operations and the ongoing flux resulting from the COVID-19 pandemic, the FY 2019-2020 adopted Budget is used as a reference for FY 2020-2021. Please note that the adopted FY 2019-2020 Budget/FY 2020-2021 Budget does not reflect projections for the actuals for FY 2020-2021. In terms of comparison, budgetary deviations or previous year deviations should be considered in the context of the COVID 19 pandemic.

**ASSOCIATED STUDENTS UCLA - SERVICES AND ENTERPRISES  
INCOME AND LOSS SUMMARY - JUNE 2021 (\$000's)  
DIVISIONS FULLY ALLOCATED**

| JUNE (05/23/21 - 06/26/21) |                |              |               |                |                |              |              |                |                | FY 19-20        |                | FISCAL YEAR 2020-2021               |                |                 |                |                 |               |                |                |   |  | FY 19-20 |  |
|----------------------------|----------------|--------------|---------------|----------------|----------------|--------------|--------------|----------------|----------------|-----------------|----------------|-------------------------------------|----------------|-----------------|----------------|-----------------|---------------|----------------|----------------|---|--|----------|--|
| CURRENT MONTH              |                |              |               |                |                |              |              |                |                | **              |                | YTD 11 MONTHS (07/26/20 - 06/26/21) |                |                 |                |                 |               |                |                |   |  | **       |  |
| ACTUAL                     |                | BUDGET       |               | VARIANCE       |                |              |              | LAST YEAR ACT  |                | GROSS INCOME    | ACTUAL         |                                     | BUDGET         |                 | VARIANCE       |                 |               |                | LAST YEAR ACT  |   |  |          |  |
| \$                         | %              | \$           | %             | ACT/BUD        |                | ACT/LY ACT   |              | \$             | %              |                 | \$             | %                                   | \$             | %               | ACT/BUD        |                 | ACT/LY ACT    |                | \$             | % |  |          |  |
|                            |                |              |               | \$             | %              | \$           | %            |                |                |                 |                |                                     |                |                 | \$             | %               | \$            | %              |                |   |  |          |  |
| 3,417                      |                | 4,064        |               | (647)          | (15.9%)        | 298          | 9.6%         | 3,119          |                | 43,420          |                | (19,447)                            | (44.8%)        | (11,768)        | (32.9%)        | 35,741          |               |                |                |   |  |          |  |
| 179                        |                | 1,750        |               | (1,571)        | (89.8%)        | 225          | (489.1%)     | (46)           |                | 18,826          |                | (17,802)                            | (94.6%)        | (9,959)         | (90.7%)        | 10,983          |               |                |                |   |  |          |  |
| 337                        |                | 318          |               | 19             | 6.0%           | 120          | 55.3%        | 217            |                | 4,978           |                | (1,418)                             | (28.5%)        | (609)           | (14.6%)        | 4,169           |               |                |                |   |  |          |  |
| 54                         |                | 161          |               | (107)          | (66.5%)        | 55           | (5500.0%)    | (1)            |                | 1,479           |                | (1,072)                             | (72.5%)        | (443)           | (52.1%)        | 850             |               |                |                |   |  |          |  |
| <b>3,987</b>               |                | <b>6,293</b> |               | <b>(2,306)</b> | <b>(36.6%)</b> | <b>698</b>   | <b>21.2%</b> | <b>3,289</b>   |                | <b>28,964</b>   |                | <b>(39,739)</b>                     | <b>(57.8%)</b> | <b>(22,779)</b> | <b>(44.0%)</b> | <b>51,743</b>   |               |                |                |   |  |          |  |
| 1,094                      | 32.0%          | 1,464        | 36.0%         | (370)          | (4.0)          | 238          | 4.6          | 856            | 27.4%          | 6,338           | 26.4%          | 14,802                              | 34.1%          | (8,464)         | (7.7)          | (4,626)         | (4.3)         | 10,964         | 30.7%          |   |  |          |  |
| 112                        | 62.6%          | 1,238        | 70.7%         | (1,126)        | (8.1)          | 159          | (39.6)       | (47)           | 102.2%         | 759             | 74.1%          | 13,261                              | 70.4%          | (12,502)        | 3.7            | (6,892)         | 4.4           | 7,651          | 69.7%          |   |  |          |  |
| 337                        | 100.0%         | 318          | 100.0%        | 19             | 0.0            | 120          | 0.0          | 217            | 100.0%         | 3,559           | 100.0%         | 4,974                               | 99.9%          | (1,415)         | 0.1            | (609)           | 0.0           | 4,168          | 100.0%         |   |  |          |  |
| 28                         | 51.9%          | 98           | 60.9%         | (70)           | (9.0)          | 30           | (148.1)      | (2)            | 200.0%         | 342             | 84.0%          | 893                                 | 60.4%          | (551)           | 23.6           | (184)           | 22.1          | 526            | 61.9%          |   |  |          |  |
| <b>1,571</b>               | <b>39.4%</b>   | <b>3,118</b> | <b>49.5%</b>  | <b>(1,547)</b> | <b>(10.1)</b>  | <b>547</b>   | <b>8.3</b>   | <b>1,024</b>   | <b>31.1%</b>   | <b>10,998</b>   | <b>38.0%</b>   | <b>33,930</b>                       | <b>49.4%</b>   | <b>(22,932)</b> | <b>(11.4)</b>  | <b>(12,311)</b> | <b>(7.0)</b>  | <b>23,309</b>  | <b>45.0%</b>   |   |  |          |  |
| 708                        | 20.7%          | 809          | 19.9%         | 101            | (0.8)          | (42)         | 0.7          | 666            | 21.4%          | 6,996           | 29.2%          | 9,210                               | 21.2%          | 2,214           | (8.0)          | 1,467           | (5.5)         | 8,463          | 23.7%          |   |  |          |  |
| 588                        | 328.5%         | 1,053        | 60.2%         | 465            | (268.3)        | (53)         | (1,491.5)    | 535            | (1163.0%)      | 5,410           | 528.3%         | 10,945                              | 58.1%          | 5,535           | (470.2)        | 3,801           | (444.4)       | 9,211          | 83.9%          |   |  |          |  |
| 162                        | 48.1%          | 139          | 43.7%         | (23)           | (4.4)          | (62)         | (2.0)        | 100            | 46.1%          | 1,779           | 50.0%          | 2,318                               | 46.6%          | 539             | (3.4)          | (420)           | (17.4)        | 1,359          | 32.6%          |   |  |          |  |
| 64                         | 118.5%         | 139          | 86.3%         | 75             | (32.2)         | 16           | (8,118.5)    | 80             | (8000.0%)      | 836             | 205.4%         | 1,498                               | 101.3%         | 662             | (104.1)        | 498             | (48.5)        | 1,334          | 156.9%         |   |  |          |  |
| <b>1,522</b>               | <b>38.2%</b>   | <b>2,140</b> | <b>34.0%</b>  | <b>618</b>     | <b>(4.2)</b>   | <b>(141)</b> | <b>3.8</b>   | <b>1,381</b>   | <b>42.0%</b>   | <b>15,021</b>   | <b>51.9%</b>   | <b>23,971</b>                       | <b>34.9%</b>   | <b>8,950</b>    | <b>(17.0)</b>  | <b>5,346</b>    | <b>(12.5)</b> | <b>20,367</b>  | <b>39.4%</b>   |   |  |          |  |
| 385                        | 11.3%          | 655          | 16.1%         | (270)          | (4.8)          | 195          | 5.2          | 190            | 6.1%           | (658)           | (2.7%)         | 5,592                               | 12.9%          | (6,250)         | (15.6)         | (3,160)         | (9.7)         | 2,502          | 7.0%           |   |  |          |  |
| (476)                      | (265.9%)       | 185          | 10.6%         | (661)          | (276.5)        | 106          | (1,531.1)    | (582)          | 1265.2%        | (4,651)         | (454.2%)       | 2,316                               | 12.3%          | (6,967)         | (466.5)        | (3,091)         | (440.0)       | (1,560)        | (14.2%)        |   |  |          |  |
| 175                        | 51.9%          | 179          | 56.3%         | (4)            | (4.4)          | 58           | (2.0)        | 117            | 53.9%          | 1,780           | 50.0%          | 2,657                               | 53.4%          | (877)           | (3.4)          | (1,028)         | (17.4)        | 2,808          | 67.4%          |   |  |          |  |
| (36)                       | (66.7%)        | (41)         | (25.5%)       | 5              | (41.2)         | 46           | (8,266.7)    | (82)           | 8200.0%        | (493)           | (121.1%)       | (605)                               | (40.9%)        | 112             | (80.2)         | 315             | (26.0)        | (808)          | (95.1%)        |   |  |          |  |
| <b>48</b>                  | <b>1.2%</b>    | <b>978</b>   | <b>15.5%</b>  | <b>(930)</b>   | <b>(14.3)</b>  | <b>405</b>   | <b>12.1</b>  | <b>(357)</b>   | <b>(10.9%)</b> | <b>(4,022)</b>  | <b>(13.9%)</b> | <b>9,960</b>                        | <b>14.5%</b>   | <b>(13,982)</b> | <b>(28.4)</b>  | <b>(6,964)</b>  | <b>(19.6)</b> | <b>2,942</b>   | <b>5.7%</b>    |   |  |          |  |
| 737                        | 21.6%          | 634          | 15.6%         | (103)          | (6.0)          | 4            | 2.2          | 741            | 23.8%          | 7,472           | 31.2%          | 6,718                               | 15.5%          | (754)           | (15.7)         | (465)           | (11.6)        | 7,007          | 19.6%          |   |  |          |  |
| 215                        | 120.1%         | 413          | 23.6%         | 198            | (96.5)         | (42)         | (496.2)      | 173            | (376.1%)       | 2,178           | 212.7%         | 4,470                               | 23.7%          | 2,292           | (189.0)        | 1,349           | (180.6)       | 3,527          | 32.1%          |   |  |          |  |
| 109                        | 32.3%          | 96           | 30.2%         | (13)           | (2.1)          | (19)         | 9.2          | 90             | 41.5%          | 1,463           | 41.1%          | 1,180                               | 23.7%          | (283)           | (17.4)         | (260)           | (12.2)        | 1,203          | 28.9%          |   |  |          |  |
| 94                         | 174.1%         | 109          | 67.7%         | 15             | (106.4)        | (12)         | (8,374.1)    | 82             | (8200.0%)      | 1,008           | 247.7%         | 1,145                               | 77.4%          | 137             | (170.3)        | 58              | (122.3)       | 1,066          | 125.4%         |   |  |          |  |
| <b>1,155</b>               | <b>29.0%</b>   | <b>1,252</b> | <b>19.9%</b>  | <b>97</b>      | <b>(9.1)</b>   | <b>(69)</b>  | <b>4.0</b>   | <b>1,086</b>   | <b>33.0%</b>   | <b>12,121</b>   | <b>41.8%</b>   | <b>13,513</b>                       | <b>19.7%</b>   | <b>1,392</b>    | <b>(22.1)</b>  | <b>682</b>      | <b>(17.1)</b> | <b>12,803</b>  | <b>24.7%</b>   |   |  |          |  |
| (352)                      | (8.8%)         | 21           | 0.3%          | (373)          | (9.1)          | 198          | 7.9          | (550)          | (16.7%)        | (8,130)         | (28.1%)        | (1,126)                             | (1.6%)         | (7,004)         | (26.5)         | (3,625)         | (19.4)        | (4,505)        | (8.7%)         |   |  |          |  |
| (691)                      | (17.3%)        | (228)        | (3.6%)        | (463)          | (13.7)         | 64           | 5.7          | (755)          | (23.0%)        | (6,829)         | (23.6%)        | (2,154)                             | (3.1%)         | (4,675)         | (20.5)         | (1,742)         | (13.8)        | (5,087)        | (9.8%)         |   |  |          |  |
| 66                         | 1.7%           | 83           | 1.3%          | (17)           | 0.4            | 39           | 0.9          | 27             | 0.8%           | 317             | 1.1%           | 1,477                               | 2.1%           | (1,160)         | (1.0)          | (1,288)         | (2.0)         | 1,605          | 3.1%           |   |  |          |  |
| (130)                      | (3.3%)         | (150)        | (2.4%)        | 20             | (0.9)          | 35           | 1.7          | (165)          | (5.0%)         | (1,501)         | (5.2%)         | (1,750)                             | (2.5%)         | 249             | (2.7)          | 373             | (1.6)         | (1,874)        | (3.6%)         |   |  |          |  |
| <b>(1,107)</b>             | <b>(27.8%)</b> | <b>(274)</b> | <b>(4.4%)</b> | <b>(833)</b>   | <b>(23.4)</b>  | <b>336</b>   | <b>16.1</b>  | <b>(1,443)</b> | <b>(43.9%)</b> | <b>(16,143)</b> | <b>(55.7%)</b> | <b>(3,553)</b>                      | <b>(5.2%)</b>  | <b>(12,590)</b> | <b>(50.5)</b>  | <b>(6,282)</b>  | <b>(36.6)</b> | <b>(9,861)</b> | <b>(19.1%)</b> |   |  |          |  |
| 4                          | 0.1%           | 2            | 0.0%          | 2              | 0.1            | 2            | 0.0          | 2              | 0.1%           | 4,789           | 16.5%          | 22                                  | 0.0%           | 4,767           | 16.5           | 4,517           | 16.0          | 272            | 0.5%           |   |  |          |  |
| 8                          | 0.2%           | 18           | 0.3%          | (10)           | (0.1)          | (3)          | (0.1)        | 11             | 0.3%           | 133             | 0.5%           | 218                                 | 0.3%           | (85)            | 0.2            | (63)            | 0.1           | 196            | 0.4%           |   |  |          |  |
| (22)                       | (0.6%)         | (26)         | (0.4%)        | 4              | (0.2)          | 4            | 0.2          | (26)           | (0.8%)         | (240)           | (0.8%)         | (281)                               | (0.4%)         | 41              | (0.4)          | 41              | (0.3)         | (281)          | (0.5%)         |   |  |          |  |
| 0                          | 0.0%           | (2)          | 0.0%          | 2              | 0.0            | 0            | 0.0          | 0              | 0.0%           | 0               | 0.0%           | (23)                                | 0.0%           | 23              | 0.0            | 0               | 0.0           | 0              | 0.0%           |   |  |          |  |
| 230                        | 5.8%           | 248          | 3.9%          | (18)           | 1.9            | (8)          | (1.4)        | 238            | 7.2%           | 2,683           | 9.3%           | 2,733                               | 4.0%           | (50)            | 5.3            | (40)            | 4.0           | 2,723          | 5.3%           |   |  |          |  |
| <b>220</b>                 | <b>5.5%</b>    | <b>240</b>   | <b>3.8%</b>   | <b>(20)</b>    | <b>1.7</b>     | <b>(5)</b>   | <b>(1.3)</b> | <b>225</b>     | <b>6.8%</b>    | <b>7,365</b>    | <b>25.4%</b>   | <b>2,669</b>                        | <b>3.9%</b>    | <b>4,696</b>    | <b>21.5</b>    | <b>4,455</b>    | <b>19.8</b>   | <b>2,910</b>   | <b>5.6%</b>    |   |  |          |  |
| <b>(887)</b>               | <b>(22.2%)</b> | <b>(34)</b>  | <b>(0.5%)</b> | <b>(853)</b>   | <b>(21.7)</b>  | <b>331</b>   | <b>14.8</b>  | <b>(1,218)</b> | <b>(37.0%)</b> | <b>(8,778)</b>  | <b>(30.3%)</b> | <b>(884)</b>                        | <b>(1.3%)</b>  | <b>(7,894)</b>  | <b>(29.0)</b>  | <b>(1,827)</b>  | <b>(16.9)</b> | <b>(6,951)</b> | <b>(13.4%)</b> |   |  |          |  |

Due to the unprecedented nature of operations and the ongoing flux resulting from the COVID-19 pandemic, the FY 2019-2020 adopted Budget is used as a reference for FY 2020-2021. Please note that the adopted FY 2019-2020 Budget/FY 2020-2021 Budget does not reflect projections for the actuals for FY 2020-2021. In terms of comparison, budgetary deviations or previous year deviations should be considered in the context of the COVID 19 pandemic.

**ASSOCIATED STUDENTS UCLA  
NET PROFIT (LOSS) SUMMARY ACTUAL TO PROJECTION VARIANCES JUNE, 2021**

|                                 | <b>June<br/>Projection</b> | <b>June<br/>Actual</b> | <b>June<br/>Variance</b> |
|---------------------------------|----------------------------|------------------------|--------------------------|
| <b>GROSS INCOME</b>             |                            |                        |                          |
| UCLA Store                      | \$2,256,149                | \$3,416,606            | \$1,160,457              |
| UCLA Restaurants                | 127,932                    | 179,009                | 51,077                   |
| Services                        | 140,111                    | 154,852                | 14,741                   |
| Licensing                       | 89,553                     | 182,439                | 92,886                   |
| Student Support/Union           | 22,309                     | 53,731                 | 31,422                   |
| <b>TOTAL GROSS INCOME</b>       | <b>\$2,636,054</b>         | <b>\$3,986,637</b>     | <b>\$1,350,583</b>       |
| <b>GROSS MARGIN</b>             |                            |                        |                          |
| UCLA Store                      | \$670,633                  | \$1,093,521            | \$422,888                |
| UCLA Restaurants                | 90,141                     | 112,088                | 21,947                   |
| Services                        | 140,091                    | 154,852                | 14,761                   |
| Licensing                       | 89,553                     | 182,439                | 92,886                   |
| Student Support/Union           | 15,588                     | 27,993                 | 12,405                   |
| <b>TOTAL GROSS MARGIN</b>       | <b>\$1,006,006</b>         | <b>\$1,570,893</b>     | <b>\$564,887</b>         |
| <b>CONTRIBUTION</b>             |                            |                        |                          |
| UCLA Store                      | \$3,465                    | \$385,282              | \$381,817                |
| UCLA Restaurants                | (409,648)                  | (476,388)              | (66,740)                 |
| Services                        | 123,763                    | 138,295                | 14,532                   |
| Licensing                       | (5,741)                    | 37,062                 | 42,803                   |
| Student Support/Union           | (82,615)                   | (35,881)               | 46,734                   |
| <b>TOTAL CONTRIBUTION</b>       | <b>(\$370,776)</b>         | <b>\$48,370</b>        | <b>\$419,146</b>         |
| <b>ALLOCATED EXPENSES</b>       |                            |                        |                          |
| Admin & Support Svcs            | \$640,000                  | \$668,000              | (\$28,000)               |
| Plant Maintenance               | 326,823                    | 282,000                | 44,823                   |
| Plant Utilities                 | 65,253                     | 35,000                 | 30,253                   |
| Depreciation                    | 195,000                    | 170,000                | 25,000                   |
| <b>TOTAL ALLOCATED EXPENSES</b> | <b>\$1,227,076</b>         | <b>\$1,155,000</b>     | <b>\$72,076</b>          |
| <b>OTHER</b>                    |                            |                        |                          |
| Non-Recurrent Income/(Expense)  | \$2,000                    | \$4,000                | \$2,000                  |
| Student Union Fee               | 247,000                    | 230,000                | (\$17,000)               |
| Interest Income                 | 9,000                      | 8,000                  | (\$1,000)                |
| Income Taxes                    | 0                          | 0                      | \$0                      |
| Interest Expense                | (21,854)                   | (21,854)               | \$0                      |
| <b>TOTAL OTHER</b>              | <b>\$236,146</b>           | <b>\$220,146</b>       | <b>(\$16,000)</b>        |
| <b>NET PROFIT/(LOSS)</b>        | <b>(\$1,361,706)</b>       | <b>(\$886,484)</b>     | <b>\$475,222</b>         |
| <b>% TO SALES</b>               | <b>-51.66%</b>             | <b>-22.24%</b>         | <b>35.19%</b>            |

**ASSOCIATED STUDENTS UCLA  
SERVICES AND ENTERPRISES  
BALANCE SHEETS**  
(\$000)

|  | Current Month<br>June 2021 | Prior Month<br>May 2021 | Prior Year<br>July 2020 |
|--|----------------------------|-------------------------|-------------------------|
| <b>ASSETS</b>                                  |                            |                         |                         |
| CURRENT ASSETS:                                |                            |                         |                         |
| Cash and cash equivalents                      | \$27,685                   | \$26,045                | \$18,663                |
| Accounts receivable                            | 3,351                      | 3,342                   | 3,181                   |
| Less: Allowance for doubtful accounts          | (384)                      | (385)                   | (390)                   |
| Accounts receivable, net                       | 2,966                      | 2,956                   | 2,791                   |
| Student fees receivable                        | 230                        | 0                       | 66                      |
| Inventories                                    | 4,600                      | 5,080                   | 7,148                   |
| Prepaid expenses and other current assets      | 480                        | 457                     | 281                     |
| Total current assets                           | 35,962                     | 34,538                  | 28,949                  |
| LONG TERM ASSETS                               |                            |                         |                         |
| Property, equipment and improvements           | 73,774                     | 73,748                  | 73,501                  |
| Less: Accumulated depreciation                 | (55,585)                   | (55,415)                | (53,633)                |
| Total long term assets                         | 18,189                     | 18,334                  | 19,868                  |
| <b>TOTAL ASSETS</b>                            | <b>\$54,151</b>            | <b>\$52,871</b>         | <b>\$48,817</b>         |
| <b>LIABILITIES AND RETAINED EARNINGS</b>       |                            |                         |                         |
| CURRENT LIABILITIES:                           |                            |                         |                         |
| Accounts payable                               | \$7,616                    | \$7,400                 | \$6,911                 |
| Wages and payroll taxes payable                | 30,928                     | 28,913                  | 14,212                  |
| Sales tax payable & other liabilities          | 1,882                      | 1,884                   | 980                     |
| Refundable advance                             | 0                          | 0                       | 4,685                   |
| Interest payable                               | 25                         | 3                       | 57                      |
| Deferred income                                | 2,234                      | 2,456                   | 882                     |
| Funds held for others                          | 471                        | 333                     | 368                     |
| Current portion of long term debt              | 992                        | 992                     | 948                     |
| Total current liabilities                      | 44,148                     | 41,981                  | 29,043                  |
| LONG TERM DEBT:                                |                            |                         |                         |
| AU expansion loan                              | 4,246                      | 4,246                   | 5,238                   |
| Total long term debt                           | 4,246                      | 4,246                   | 5,238                   |
| <b>TOTAL LIABILITIES</b>                       | <b>48,394</b>              | <b>46,227</b>           | <b>34,281</b>           |
| RETAINED EARNINGS:                             |                            |                         |                         |
| Beginning Balance                              | 14,535                     | 14,535                  | 23,797                  |
| Year-to-date net income/(loss)                 | (8,778)                    | (7,892)                 | (9,262)                 |
| Ending Balance                                 | 5,757                      | 6,644                   | 14,535                  |
| <b>TOTAL LIABILITIES AND RETAINED EARNINGS</b> | <b>54,151</b>              | <b>52,871</b>           | <b>\$48,817</b>         |



**ASSOCIATED STUDENTS UCLA  
SERVICES AND ENTERPRISES  
STATEMENTS OF CASH FLOWS  
June 2021  
(\$000's)**

**CASH FLOWS FROM OPERATING ACTIVITIES:**

Net income/(loss) (887)  
 Adjustments to reconcile net income/(loss) to net cash provided/(used) by operating activities:  
   Depreciation 170  
   Loss (Gain) on disposal of fixed assets 0  
(Increase)/decrease in current assets:  
   Accounts receivable (10)  
   Student fees receivable (230)  
   Inventories 480  
   Prepaid expenses and other current assets (24)  
Increase/(decrease) in current liabilities:  
   Accounts payable 166  
   Sales tax payable & other liabilities (2)  
   Wages and payroll taxes payable 2,015  
   Interest payable 22  
   Deferred Income (223)  
   Funds held for others 138

Net cash provided/(used) by operating activities

**CASH PROVIDED/(USED) BY INVESTING ACTIVITIES:**

Purchase of property, equipment and improvements 25

Net cash used in investing activities

**CASH PROVIDED/(USED) BY FINANCING ACTIVITIES:**

Principal payments on AU expansion loan 0  
 Refundable Advance 0

Net cash provided/(used) by financing activities

**NET INCREASE/(DECREASE) IN CASH AND CASH EQUIVALENTS**

**CASH AND CASH EQUIVALENTS, Beginning**

**CASH AND CASH EQUIVALENTS, Ending**

| Current Month | Year to Date   | Prior Year to Date |
|---------------|----------------|--------------------|
| (887)         | (8,778)        | (\$6,951)          |
| 170           | 1,968          | 2,168              |
| 0             | 0              | 0                  |
| (10)          | (176)          | 194                |
| (230)         | (164)          | 104                |
| 480           | 2,549          | (778)              |
| (24)          | (199)          | 33                 |
| 166           | 704            | (2,008)            |
| (2)           | 901            | 23                 |
| 2,015         | 16,715         | 8,583              |
| 22            | (31)           | (35)               |
| (223)         | 1,352          | 186                |
| 138           | 103            | 223                |
| <b>1,615</b>  | <b>14,944</b>  | <b>1,742</b>       |
| 25            | (288)          | (848)              |
| <b>25</b>     | <b>(288)</b>   | <b>(848)</b>       |
| 0             | (948)          | (909)              |
| 0             | (4,685)        | 4,685              |
| <b>0</b>      | <b>(5,633)</b> | <b>3,776</b>       |
| <b>1,640</b>  | <b>9,022</b>   | <b>4,670</b>       |
| <b>26,045</b> | <b>18,663</b>  | <b>12,951</b>      |
| <b>27,685</b> | <b>27,685</b>  | <b>\$17,621</b>    |

**ASSOCIATED STUDENTS UCLA  
SERVICES AND ENTERPRISES  
CASH RESERVE COMPUTATION  
June 2021  
(\$000's)**

|                                    | <b>Current Month<br/>June 2021</b> | <b>Prior Month<br/>May 2021</b> |
|------------------------------------|------------------------------------|---------------------------------|
| <b>CASH AND CASH EQUIVALENTS</b>   | <b>27,685</b>                      | <b>26,045</b>                   |
| <b>BOARD REQUIRED CASH RESERVE</b> | <u><b>4,705</b></u>                | <u><b>4,716</b></u>             |
| <b>RESERVE SURPLUS (DEFICIT)</b>   | <u><u><b>22,980</b></u></u>        | <u><u><b>21,329</b></u></u>     |

ASUCLA SERVICES AND ENTERPRISES  
Capital Expenditures - FY2019-20 Projects (\$000's)  
FY 2020-2021 June 2021

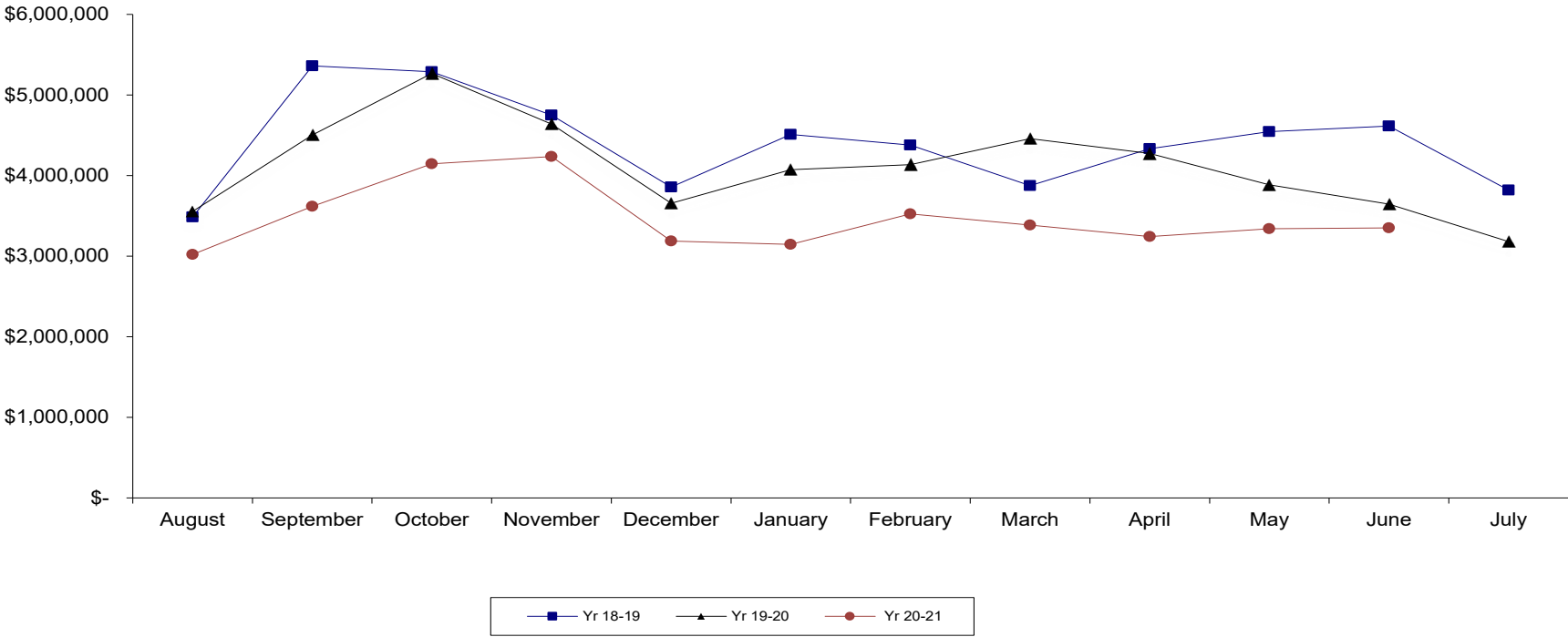
| PROJECT NAME   | BUDGET         | PROJECTED    |              |                |                   |              |                  | Status                       |
|--|----------------|--------------|--------------|----------------|-------------------|--------------|------------------|------------------------------|
|  |                | Payments     | PO's         | Total          | Remaining Balance | Pending      | Over (Under)     |                              |
| <b>Store/Services</b>                                    |                |              |              |                |                   |              |                  |                              |
| 2019-001 Store Copiers                                   | 125.0          | 40.8         | 4.2          | 45.0           | 80.0              |              | (80.0)           | In Progress                  |
| 2019-002 Store General Replacement                       | 25.0           | 0.0          | 0.0          | 0.0            | 25.0              |              | (25.0)           | Canceled                     |
| 2019-003 Neon Sign Replacement                           | 10.0           | 0.0          | 0.0          | 0.0            | 10.0              |              | (10.0)           | Canceled                     |
| 2020-006 Bearwear Concession Tents                       | 0.0            | 0.0          | 21.6         | 21.6           | 3.4               |              | 21.6             | In Progress                  |
| 2020-007 Lu Valle Store Update                           | 0.0            | 16.3         | 19.6         | 35.9           | 14.1              |              | 35.9             | In Progress                  |
| <b>Total Store/Services</b>                              | <b>160.0</b>   | <b>57.1</b>  | <b>45.4</b>  | <b>102.5</b>   | <b>132.5</b>      | <b>0.0</b>   | <b>(57.5)</b>    |                              |
| <b>Food Service</b>                                      |                |              |              |                |                   |              |                  |                              |
| 2019-004 FS Miscellaneous and Unanticipated              | 50.0           | 19.3         | 13.5         | 32.9           | 17.1              |              | (17.1)           | In Progress                  |
| 2019-005 FS Patio Furniture Upgrade                      | 20.0           | 0.0          | 0.0          | 0.0            | 20.0              |              | (20.0)           | Canceled                     |
| 2019-006 Patio Umbrellas                                 | 30.0           | 0.0          | 0.0          | 0.0            | 30.0              |              | (30.0)           | Canceled                     |
| 2019-007 Chef Express Ovens                              | 15.0           | 6.8          | 0.0          | 6.8            | 8.2               |              | (8.2)            | In Progress                  |
| 2019-008 KCH Dining Room Upgrade                         | 100.0          | 0.0          | 0.0          | 0.0            | 100.0             |              | (100.0)          | Canceled                     |
| 2019-009 Deep Fryer                                      | 15.0           | 16.8         | 0.0          | 16.8           | (1.8)             |              | 1.8              | Completed                    |
| 2019-010 LuValle Patio Enhancements                      | 75.0           | 0.0          | 0.0          | 0.0            | 75.0              |              | (75.0)           | Canceled                     |
| 2019-011 LuValle Interior Lamination                     | 25.0           | 0.0          | 0.0          | 0.0            | 25.0              |              | (25.0)           | Canceled                     |
| 2019-012 Commissary Kitchen Equipment Upgrades           | 35.0           | 0.0          | 0.0          | 0.0            | 35.0              | 35.0         | 0.0              | Pending                      |
| 2019-013 Northern Lights Lounge Furniture                | 10.0           | 0.0          | 0.0          | 0.0            | 10.0              |              | (10.0)           | Canceled                     |
| 2019-014 Café Synapse Cosmetic Improvements              | 250.0          | 0.0          | 0.0          | 0.0            | 250.0             |              | (250.0)          | Canceled                     |
| 2020-004 Infrastructure for Starship                     | 0.0            | 15.5         | 34.5         | 50.0           | 0.0               |              | 50.0             | In Progress                  |
| 2020-008 Air Fryer                                       | 0.0            | 0.0          | 0.0          | 0.0            | 10.0              |              | 0.0              | Pending                      |
| <b>Total Food Services</b>                               | <b>625.0</b>   | <b>58.5</b>  | <b>48.1</b>  | <b>106.5</b>   | <b>578.5</b>      | <b>35.0</b>  | <b>(483.5)</b>   |                              |
| <b>Technology</b>  |                |              |              |                |                   |              |                  |                              |
| 2019-015 Network Infrastructure Upgrade                  | 50.0           | 44.4         | 3.5          | 47.9           | 2.1               |              | (2.1)            | In Progress                  |
| 2019-016 Printer Replacement                             | 10.0           | 3.8          | 3.0          | 6.8            | 3.2               |              | (3.2)            | In Progress                  |
| 2019-017 PC Replacement                                  | 60.0           | 61.6         | 0.0          | 61.6           | (1.6)             |              | 1.6              | In Progress                  |
| 2019-018 Window Upgrade (Servers and Desktops)           | 195.0          | 97.6         | 12.7         | 110.3          | 84.7              |              | (84.7)           | In Progress                  |
| 2019-019 Marketing Misc. Hardware/Software Upgrades      | 15.0           | 14.4         | 0.0          | 14.4           | 0.6               |              | (0.6)            | Completed                    |
| 2019-020 Oversize printer replacement                    | 18.0           | 15.9         | 0.1          | 16.0           | 2.0               |              | (2.0)            | In Progress                  |
| 2019-021 Video Equipment                                 | 6.0            | 6.0          | (0.0)        | 6.0            | 0.0               |              | (0.0)            | Completed                    |
| 2020-001 Hardware for Photography Computer               | 0.0            | 3.3          | 0.0          | 3.3            | 0.5               |              | 3.3              | In Progress                  |
| 2020-002 Financial Dashboard                             | 0.0            | 1.8          | 13.2         | 15.0           | 0.0               |              | 15.0             | In Progress                  |
| <b>Total Technology</b>                                  | <b>354.0</b>   | <b>248.7</b> | <b>32.5</b>  | <b>281.2</b>   | <b>91.6</b>       | <b>0.0</b>   | <b>(72.8)</b>    |                              |
| <b>Trademarks &amp; Licensing</b>                        |                |              |              |                |                   |              |                  |                              |
| 2019-022 Office Remodel and Showroom                     | 100.0          | 1.7          | 0.0          | 1.7            | 98.3              |              | (98.3)           | In Progress                  |
| 2019-023 Database/Dashboard                              | 100.0          | 0.0          | 0.0          | 0.0            | 100.0             |              | (100.0)          | Canceled                     |
| <b>Total Trademarks &amp; Licensing</b>                  | <b>200.0</b>   | <b>1.7</b>   | <b>0.0</b>   | <b>1.7</b>     | <b>198.3</b>      | <b>0.0</b>   | <b>(198.3)</b>   |                              |
| <b>Others</b>  |                |              |              |                |                   |              |                  |                              |
| 2019-024 Fac Misc. and Remodels                          | 75.0           | 28.1         | 45.5         | 73.6           | 1.4               |              | (1.4)            | Completed - Awaiting Invoice |
| 2019-025 LVC South Entrance Waterproofing                | 290.0          | 0.0          | 0.0          | 0.0            | 290.0             | 125.0        | (165.0)          | Pending                      |
| 2019-026 AU Water Regulator Heads                        | 40.0           | 23.2         | (0.0)        | 23.2           | 16.8              |              | (16.8)           | Completed                    |
| 2019-027 AU/KH HVAC MBC Panel Replace/Upgrade            | 100.0          | 0.0          | 121.9        | 121.9          | (21.9)            |              | 21.9             | In Progress                  |
| 2019-028 Retrofit CSSC Blaze Hoods                       | 5.0            | 0.0          | 0.0          | 0.0            | 5.0               |              | (5.0)            | Canceled                     |
| 2019-029 AU A-Level Store Fire Doors                     | 250.0          | 0.0          | 0.0          | 0.0            | 250.0             |              | (250.0)          | Canceled                     |
| 2019-030 TH Kitchen Waterproofing                        | 55.0           | 49.3         | (0.0)        | 49.3           | 5.7               |              | (5.7)            | Completed                    |
| 2019-031 AU/KH Lighting Controls                         | 5.0            | 0.0          | 0.0          | 0.0            | 5.0               | 5.0          | 0.0              | Pending                      |
| 2019-032 Replace HVAC Motors                             | 45.0           | 0.0          | 0.0          | 0.0            | 45.0              |              | (45.0)           | Canceled                     |
| 2019-033 Custodial Replacements                          | 10.0           | 20.0         | 0.0          | 20.0           | (10.0)            |              | 10.0             | Completed                    |
| 2019-034 SUO Mtg Rm/Venue Equipment                      | 60.0           | 0.0          | 35.3         | 35.3           | 24.7              |              | (24.7)           | In Progress                  |
| 2019-035 SUO General Replacement                         | 15.0           | 3.0          | 3.0          | 6.0            | 9.0               |              | (9.0)            | In Progress                  |
| 2019-036 SUO Lounge Upgrades                             | 40.0           | 0.0          | 0.0          | 0.0            | 40.0              |              | (40.0)           | Canceled                     |
| 2019-037 SUO Coop Dining Acoustical Enhancement          | 35.0           | 0.0          | 0.0          | 0.0            | 35.0              | 35.0         | 0.0              | Pending                      |
| 2019-038 SUO Information Window and Office Remodel       | 30.0           | 0.0          | 0.0          | 0.0            | 30.0              | 30.0         | 0.0              | Pending                      |
| 2019-039 KGS Sideroom Renovation                         | 18.5           | 5.6          | 0.0          | 5.6            | 12.9              |              | (12.9)           | In Progress                  |
| 2019-040 KGS Presentation Upgrade                        | 10.5           | 0.0          | 0.0          | 0.0            | 10.5              | 10.5         | 0.0              | Pending                      |
| 2019-041 Stateroom Carpet and In-Ceiling Projection Scre | 32.0           | 0.0          | 0.0          | 0.0            | 32.0              |              | (32.0)           | Canceled                     |
| 2019-042 Wireless Portable Sound Systems                 | 8.5            | 0.0          | 0.0          | 0.0            | 8.5               | 8.5          | 0.0              | Pending                      |
| 2019-043 Virtual EMS                                     | 20.0           | 25.1         | 1.4          | 26.5           | (6.5)             |              | 6.5              | Completed - Awaiting Invoice |
| 2019-044 Finance Misc. Replacements                      | 15.0           | 2.5          | 0.0          | 2.5            | 12.5              |              | (12.5)           | In Progress                  |
| 2019-045 MCO Equipment - currency counter                | 30.0           | 0.0          | 0.0          | 0.0            | 30.0              | 30.0         | 0.0              | Pending                      |
| 2019-046 Replace Cameras                                 | 40.0           | 47.8         | 0.0          | 47.8           | (7.8)             |              | 7.8              | Completed                    |
| 2019-047 EDO Office Furniture                            | 3.5            | 0.0          | 0.0          | 0.0            | 3.5               | 3.5          | 0.0              | Pending                      |
| 2019-048 EDO Lighting                                    | 8.0            | 0.0          | 0.0          | 0.0            | 8.0               | 8.0          | 0.0              | Pending                      |
| 2019-049 North Campus Student Center Kitchen Roof        | 0.0            | 31.7         | 0.0          | 31.7           | 0.0               |              | 31.7             | Completed                    |
| 2019-050 Law Conceptual Design                           | 0.0            | 35.0         | 0.0          | 35.0           | 0.0               |              | 35.0             | Completed                    |
| 2019-051 AU Elevator Hoist Rope Replacement              | 0.0            | 18.9         | 23.1         | 42.0           | 0.0               |              | 42.0             | Completed - Awaiting Invoice |
| 2019-052 Kerckhoff Elevator Work                         | 0.0            | 0.0          | 16.0         | 16.0           | 0.0               |              | 16.0             | Completed - Awaiting Invoice |
| 2019-053 Customer Feedback Kiosks                        | 0.0            | 1.1          | 0.5          | 1.6            | 1.9               |              | 1.6              | Completed - Awaiting Invoice |
| 2019-054 Marketing Office Remodel                        | 0.0            | 0.0          | 6.9          | 6.9            | 9.1               |              | 6.9              | In Progress                  |
| 2019-055 COVID-19  | 0.0            | 0.0          | 0.0          | 0.0            | 10.0              |              | 0.0              | Pending                      |
| 2019-056 AU Condensate Pump                              | 0.0            | 0.0          | 56.8         | 56.8           | (1.8)             |              | 56.8             | In Progress                  |
| 2020-003 CSSC Water Heater Replacement                   | 0.0            | 36.3         | 0.0          | 36.3           | 0.7               |              | 36.3             | In Progress                  |
| 2020-005 LVC Kitchen Storage Room Floor                  | 0.0            | 0.0          | 0.0          | 0.0            | 3.7               |              | 0.0              | In Progress                  |
| <b>Total Others</b>                                      | <b>1,241.0</b> | <b>327.7</b> | <b>310.3</b> | <b>638.0</b>   | <b>852.9</b>      | <b>255.5</b> | <b>(347.5)</b>   |                              |
| <b>Total Year Projects</b>                               | <b>2,580.0</b> | <b>693.7</b> | <b>436.2</b> | <b>1,129.9</b> | <b>1,853.8</b>    | <b>290.5</b> | <b>(1,159.6)</b> |                              |

ASSOCIATED STUDENTS UCLA SERVICES AND ENTERPRISES  
ACCOUNTS RECEIVABLE AGING REPORT

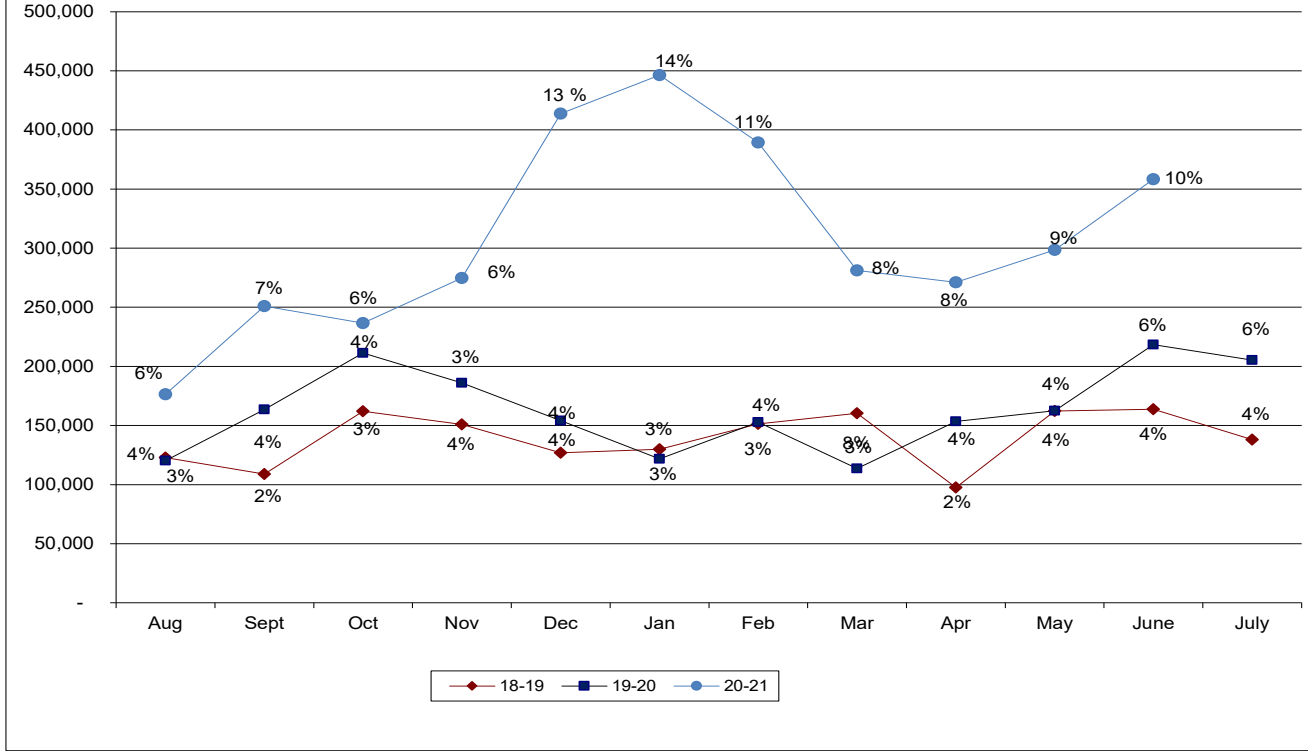
| 06/26/21                   | Jun | Current            | %           | 30+               | %           | 60+              | %           | 90+               | %           | 120+             | %           | 150+             | %           | Total              | %           |
|----------------------------|-----|--------------------|-------------|-------------------|-------------|------------------|-------------|-------------------|-------------|------------------|-------------|------------------|-------------|--------------------|-------------|
| UNIVERSITY                 |     | \$1,269,250        | 43%         | \$25,752          | -228%       | \$3,485          | 3%          | \$4,401           | 25%         | \$0              | 1%          | \$331            | 0%          | \$1,303,219        | 40%         |
| ASUCLA PUBLICATIONS        |     | \$73,958           | 2%          | \$0               | 0%          | \$0              | 0%          | \$0               | 0%          | \$0              | 0%          | \$0              | 0%          | \$73,958           | 2%          |
| ASUCLA USA/GSA             |     | \$169,054          | 6%          | \$0               | 0%          | \$0              | 0%          | \$0               | 0%          | \$0              | 0%          | \$0              | 0%          | \$169,054          | 5%          |
| DUE FROM VENDORS           |     | \$374,870          | 12%         | (\$51,342)        | 454%        | \$44,786         | 32%         | \$13,791          | 78%         | \$121,712        | 99%         | \$81,141         | 99%         | \$584,958          | 17%         |
| DENTAL KITS                |     | \$67,072           | 2%          | \$0               | 0%          | \$0              | 0%          | \$0               | 0%          | \$0              | 0%          | \$0              | 0%          | \$67,072           | 2%          |
| OTHER                      |     | 1,049,680          | 35%         | \$14,282          | -126%       | \$88,589         | 65%         | (\$470)           | -3%         | (\$1)            | 0%          | \$449            | 1%          | \$1,152,529        | 34%         |
| <b>TOTAL CURRENT MONTH</b> |     | <b>\$3,003,884</b> | <b>100%</b> | <b>(\$11,308)</b> | <b>100%</b> | <b>\$136,860</b> | <b>100%</b> | <b>\$17,722</b>   | <b>100%</b> | <b>\$121,711</b> | <b>100%</b> | <b>\$81,921</b>  | <b>100%</b> | <b>\$3,350,790</b> | <b>100%</b> |
|                            |     | 90%                |             | 0%                |             | 4%               |             | 1%                |             | 3%               |             | 2%               |             | 100%               |             |
|                            |     |                    |             |                   |             |                  |             |                   |             |                  |             |                  |             |                    |             |
| 05/22/21                   | May | Current            | %           | 30+               | %           | 60+              | %           | 90+               | %           | 120+             | %           | 150+             | %           | Total              | %           |
| UNIVERSITY                 |     | \$733,186          | 27%         | \$197,321         | 55%         | \$30,320         | 45%         | \$12,143          | -16%        | \$0              | 1%          | \$1,319          | 1%          | \$974,289          | 29%         |
| ASUCLA PUBLICATIONS        |     | \$117,906          | 4%          | \$0               | 0%          | \$0              | 0%          | \$0               | 0%          | \$0              | 0%          | \$0              | 0%          | \$117,906          | 4%          |
| ASUCLA USA/GSA             |     | \$204,008          | 8%          | \$0               | 0%          | \$0              | 0%          | \$0               | 0%          | \$0              | 0%          | \$0              | 0%          | \$204,008          | 6%          |
| DUE FROM VENDORS           |     | \$340,851          | 13%         | \$57,341          | 16%         | \$36,615         | 53%         | (\$88,428)        | 118%        | \$179,484        | 98%         | \$119,656        | 96%         | \$645,519          | 19%         |
| DENTAL KITS                |     | \$378,099          | 14%         | \$0               | 0%          | \$0              | 0%          | \$0               | 0%          | \$0              | 0%          | \$0              | 0%          | \$378,099          | 11%         |
| OTHER                      |     | \$908,169          | 34%         | \$106,394         | 29%         | \$1,153          | 2%          | \$1,339           | -2%         | \$1,568          | 1%          | \$3,328          | 3%          | \$1,021,951        | 31%         |
| <b>TOTAL CURRENT MONTH</b> |     | <b>\$2,682,219</b> | <b>100%</b> | <b>\$361,056</b>  | <b>100%</b> | <b>\$68,088</b>  | <b>100%</b> | <b>(\$74,946)</b> | <b>100%</b> | <b>\$181,052</b> | <b>100%</b> | <b>\$124,303</b> | <b>100%</b> | <b>\$3,341,772</b> | <b>100%</b> |
|                            |     | 80%                |             | 11%               |             | 2%               |             | -2%               |             | 5%               |             | 4%               |             | 100%               |             |
|                            |     |                    |             |                   |             |                  |             |                   |             |                  |             |                  |             |                    |             |
| 04/24/21                   | Apr | Current            | %           | 30+               | %           | 60+              | %           | 90+               | %           | 120+             | %           | 150+             | %           | Total              | %           |
| UNIVERSITY                 |     | \$612,073          | 24%         | \$296,054         | 80%         | \$34,341         | 144%        | \$280             | 0%          | \$1,231          | 2%          | \$969            | 1%          | \$944,948          | 29%         |
| ASUCLA PUBLICATIONS        |     | \$74,967           | 3%          | \$0               | 0%          | \$0              | 0%          | \$0               | 0%          | \$0              | 0%          | \$0              | 0%          | \$74,967           | 2%          |
| ASUCLA USA/GSA             |     | \$142,221          | 5%          | \$0               | 0%          | \$0              | 0%          | \$0               | 0%          | \$0              | 0%          | \$0              | 0%          | \$142,221          | 4%          |
| DUE FROM VENDORS           |     | \$233,917          | 9%          | \$37,136          | 10%         | (\$14,166)       | -59%        | (\$100,800)       | 105%        | \$196,836        | 97%         | \$131,223        | 92%         | \$484,146          | 15%         |
| DENTAL KITS                |     | \$95,986           | 4%          | \$0               | 0%          | \$0              | 0%          | \$0               | 0%          | \$0              | 0%          | \$0              | 0%          | \$95,986           | 3%          |
| OTHER                      |     | \$1,441,664        | 55%         | \$36,614          | 10%         | \$3,656          | 15%         | \$5,070           | -5%         | \$2,800          | 1%          | \$9,620          | 7%          | \$1,499,423        | 47%         |
| <b>TOTAL CURRENT MONTH</b> |     | <b>\$2,600,828</b> | <b>100%</b> | <b>\$369,804</b>  | <b>100%</b> | <b>\$23,831</b>  | <b>100%</b> | <b>(\$95,450)</b> | <b>100%</b> | <b>\$200,867</b> | <b>100%</b> | <b>\$141,812</b> | <b>100%</b> | <b>\$3,241,692</b> | <b>100%</b> |
|                            |     | 81%                |             | 11%               |             | 1%               |             | -3%               |             | 6%               |             | 4%               |             | 100%               |             |

# Total Accounts Receivable Balances

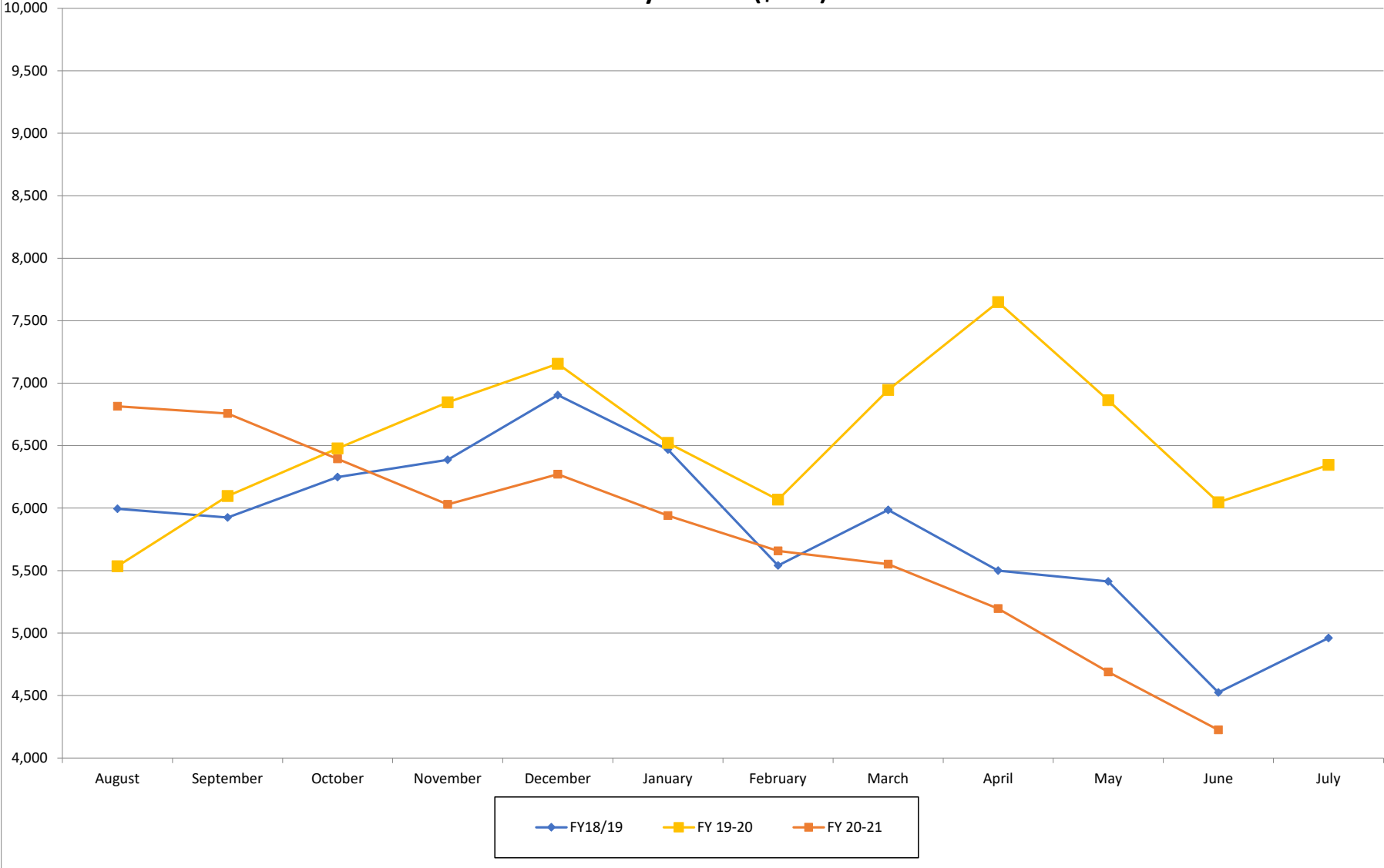
12 Month History  
Aug 20 to Jun 21



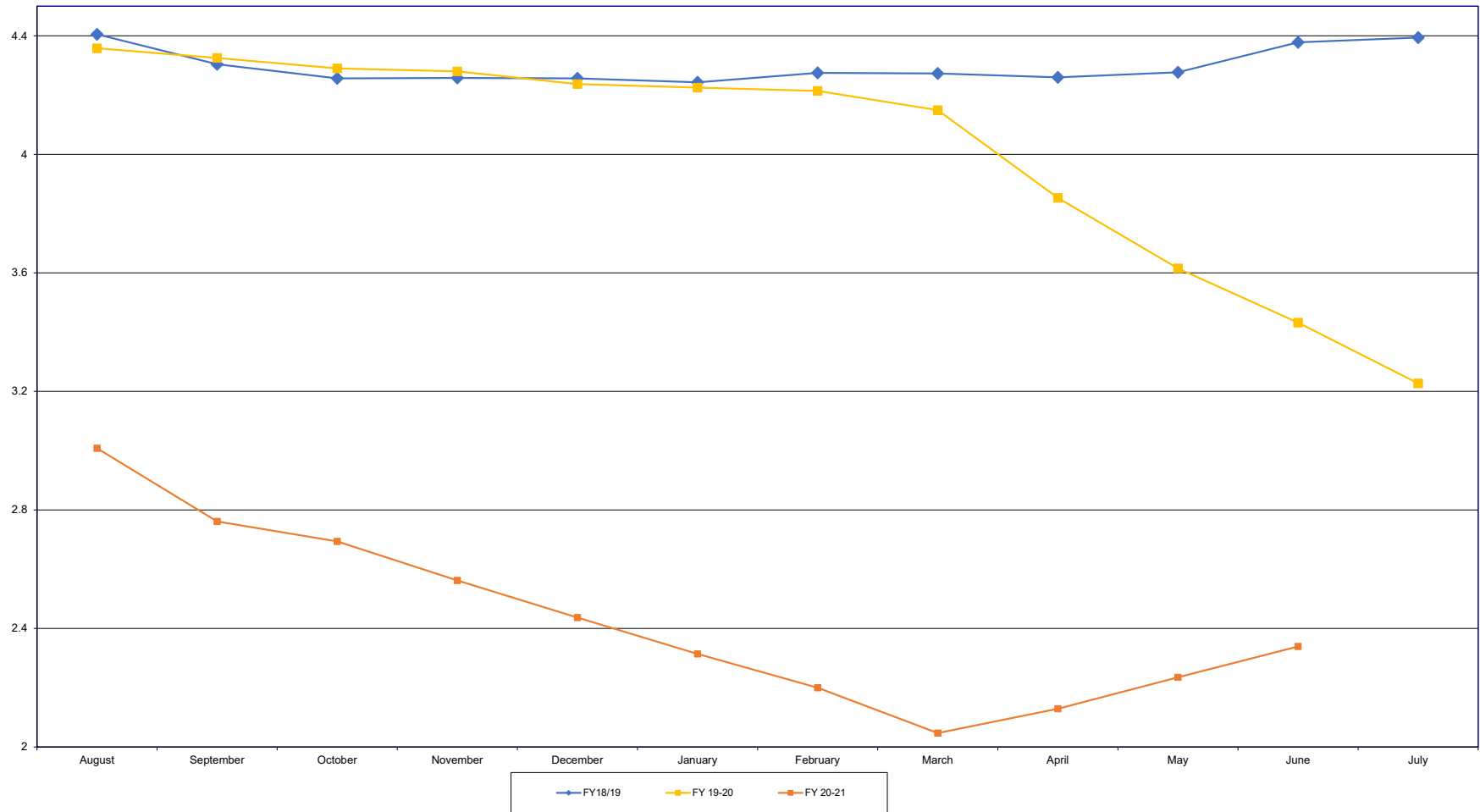
Percentages represent delinquency to outstandings



### Associated Students UCLA Store Inventory At Cost (\$000)



### Associated Students UCLA Store Inventory Turns\*



\*This value measures how quickly inventory is sold. It is defined as cost of sales for the trailing 12 months divided by month end inventory.



UCLA STORE  
INCOME STATEMENT

| JUN. 11(05/23/21-06/26/21) |           |           | FISCAL YEAR 20-21            |             |              | FISCAL YEAR 19-20 |             |
|----------------------------|-----------|-----------|------------------------------|-------------|--------------|-------------------|-------------|
| CURRENT MONTH              |           |           | YTD 11 MO(07/26/20-06/26/21) |             |              | LAST YEAR ACTUAL  |             |
| ACTUAL                     | BUDGET    | VARIANCE  | ACTUAL                       | BUDGET      | VARIANCE     | MONTH             | YTD         |
| 1,524,234                  | 1,509,000 | 15,234    | 11,990,496                   | 17,059,546  | <5,069,050>  | 1,224,341         | 15,953,664  |
| 1,169,682                  | 1,804,748 | <635,066> | 3,389,473                    | 15,224,524  | <11,835,051> | 345,724           | 9,610,406   |
| 12,197                     | 157,500   | <145,303> | 168,523                      | 1,481,763   | <1,313,240>  | 31,301            | 1,150,952   |
| 42,980                     | 135,325   | <92,345>  | 428,350                      | 1,926,175   | <1,497,825>  | 50,070            | 1,428,608   |
| 144,435                    | 79,000    | 65,435    | 2,396,302                    | 1,298,000   | 1,098,302    | 233,985           | 1,561,060   |
| 396,489                    | 237,600   | 158,889   | 4,337,882                    | 4,922,335   | <584,453>    | 1,063,415         | 4,652,873   |
| 3,290,017                  | 3,923,173 | <633,156> | 22,711,027                   | 41,912,343  | <19,201,316> | 2,948,837         | 34,357,562  |
| 2,325,797                  | 2,583,384 | 257,587   | 17,491,995                   | 28,455,650  | 10,963,655   | 2,235,554         | 24,640,422  |
|                            |           |           |                              |             |              |                   |             |
|                            |           |           |                              |             |              |                   |             |
| 7,191                      | 6,090     | <1,101>   | 37,769                       | 52,810      | 15,041       | <4,779>           | 32,631      |
| 4,242                      | 8,015     | 3,773     | 84,755                       | 74,360      | <10,395>     | 35,329            | 80,793      |
| 47                         | 710       | 663       | 3,979                        | 6,790       | 2,811        | 107               | 5,327       |
| 233                        | 750       | 517       | <1,040>                      | 10,500      | 11,540       | <2,911>           | 4,313       |
| <14,424>                   | 1,140     | 15,564    | 18,388                       | 18,170      | <218>        | <187>             | 13,022      |
| <2,711>                    | 16,705    | 19,416    | 143,853                      | 162,630     | 18,777       | 27,559            | 136,086     |
| 2,323,085                  | 2,600,089 | 277,004   | 17,635,848                   | 28,618,280  | 10,982,432   | 2,263,113         | 24,776,508  |
|                            |           |           |                              |             |              |                   |             |
| 70.7                       | 65.9      | <4.8>     | 77.0                         | 67.9        | <9.1>        | 75.8              | 71.7        |
| 966,932                    | 1,323,084 | <356,152> | 5,075,179                    | 13,294,063  | <8,218,884>  | 685,724           | 9,581,054   |
| 29.3                       | 34.2      | <4.8>     | 23.0                         | 32.1        | <9.1>        | 24.2              | 28.3        |
| <0.1>                      | 0.4       | 0.5       | 0.6                          | 0.4         | <0.2>        | 0.9               | 0.4         |
|                            |           |           |                              |             |              |                   |             |
| 29.4                       | 33.7      | <4.3>     | 22.4                         | 31.7        | <9.4>        | 23.3              | 27.9        |
|                            |           |           |                              |             |              |                   |             |
| 13.6                       | 11.2      | 2.4       | 12.4                         | 15.4        | <3.0>        | 11.2              | 13.2        |
| 51.2                       | 50.7      | 0.5       | 46.8                         | 49.4        | <2.6>        | 55.9              | 49.6        |
| 36.4                       | 42.2      | <5.8>     | 35.4                         | 41.6        | <6.2>        | 25.6              | 40.2        |
| 11.0                       | 38.0      | <27.0>    | 10.8                         | 34.9        | <24.1>       | 6.3               | 29.6        |
| 49.2                       | 53.1      | <4.0>     | 50.0                         | 51.6        | <1.6>        | 53.2              | 50.8        |
| 20.4                       | 33.1      | <12.7>    | 16.0                         | 24.0        | <8.0>        | 20.7              | 22.1        |
|                            |           |           |                              |             |              |                   |             |
| 126,589                    | 140,889   | <14,300>  | 1,262,364                    | 1,508,027   | <245,663>    | 170,450           | 1,383,309   |
| 1,093,521                  | 1,463,973 | <370,452> | 6,337,542                    | 14,802,090  | <8,464,548>  | 856,174           | 10,964,362  |
|                            |           |           |                              |             |              |                   |             |
|                            |           |           |                              |             |              |                   |             |
| 245,645                    | 268,093   | 22,448    | 2,776,716                    | 2,938,887   | 162,171      | 260,143           | 2,871,705   |
| 516                        | 300       | <216>     | 5,579                        | 2,700       | <2,879>      | 273               | 11,107      |
| 139,884                    | 257,392   | 117,510   | 1,136,206                    | 2,577,825   | 1,441,619    | 83,956            | 2,115,008   |
| 386,044                    | 525,785   | 139,741   | 3,918,502                    | 5,519,412   | 1,600,910    | 344,372           | 4,997,820   |
| 11.7                       | 13.4      | 1.7       | 17.3                         | 13.2        | <4.1>        | 11.7              | 14.6        |
|                            |           |           |                              |             |              |                   |             |
| 122,457                    | 135,569   | 13,112    | 1,344,284                    | 1,482,570   | 138,286      | 132,821           | 1,394,699   |
| 16,959                     | 4,458     | <12,501>  | 114,577                      | 74,587      | <39,990>     | 25,002            | 114,397     |
| 8,964                      | 9,941     | 1,077     | 85,886                       | 108,159     | 22,273       | 7,828             | 126,382     |
| 47                         | 3         | <44>      | 45                           | 101         | 56           | 13                | 184         |
| 98                         | 300       | 202       | 646                          | 46,100      | 45,454       | <278>             | 40,538      |
| 299                        | 300       | 1         | 3,325                        | 6,620       | 3,295        | 299               | 6,187       |
| 1,733                      | 3,800     | 2,067     | 17,794                       | 58,555      | 40,761       | 393               | 63,972      |
| 48,450                     | 17,850    | <30,600>  | 472,469                      | 238,771     | <233,698>    | 83,411            | 348,697     |
| 1,000                      | 1,000     | 0         | 8,981                        | 12,800      | 3,819        | 900               | 8,713       |
| 0                          | 0         | 0         | 0                            | 0           | 0            | 0                 | 395         |
| 0                          | 0         | 0         | 0                            | 0           | 0            | 0                 | 77          |
| 11,906                     | 9,488     | <2,418>   | 132,190                      | 228,515     | 96,325       | 4,618             | 209,558     |
| <1,202>                    | <2,150>   | <948>     | <33,121>                     | <98,750>    | <65,629>     | <3,086>           | <92,103>    |
| 6                          | 15        | 9         | 226,047                      | 294,665     | 68,618       | <0>               | 280,894     |
| 0                          | 0         | 0         | 0                            | 0           | 0            | 0                 | 104         |
| 3,430                      | 2,910     | <520>     | 24,272                       | 35,205      | 10,933       | 3,963             | 36,007      |
| 38,293                     | 63,374    | 25,082    | 339,035                      | 792,559     | 453,524      | 28,725            | 600,580     |
| <0>                        | 0         | 0         | 710                          | 0           | <710>        | <123>             | 4,713       |
| 191                        | 0         | <191>     | 4,480                        | 0           | <4,480>      | 634               | 9,930       |
| 0                          | 0         | 0         | 322                          | 0           | <322>        | 0                 | 0           |
| 134                        | 0         | <134>     | 2,007                        | 3,100       | 1,093        | 0                 | 3,089       |
| 55                         | 0         | <55>      | 651                          | 300         | <351>        | 0                 | 300         |
| 25,289                     | 10,065    | <15,224>  | 166,353                      | 116,215     | <50,138>     | 14,069            | 142,493     |
| 10,821                     | 0         | <10,821>  | 21,661                       | 3,340       | <18,321>     | 5,500             | 8,154       |
| 22,256                     | 21,600    | <656>     | 22,698                       | 21,600      | <1,098>      | 429               | 429         |
| 584                        | 300       | <284>     | 11,579                       | 65,250      | 53,671       | 3,956             | 13,986      |
| 158                        | 100       | <58>      | 789                          | 60,130      | 59,341       | 26                | 50,085      |
| 9,386                      | 0         | <9,386>   | 88,666                       | 0           | <88,666>     | 12,912            | 36,898      |
| 0                          | 2         | 2         | 0                            | 20          | 20           | 0                 | 0           |
| 982                        | 4,700     | 3,718     | 20,997                       | 140,525     | 119,528      | 0                 | 55,423      |
| 322,195                    | 283,625   | <38,570>  | 3,077,343                    | 3,690,937   | 613,594      | 322,014           | 3,464,780   |
| 708,239                    | 809,410   | 101,171   | 6,995,845                    | 9,210,349   | 2,214,504    | 666,386           | 8,462,599   |
|                            |           |           |                              |             |              |                   |             |
| 385,282                    | 654,563   | <269,281> | <658,303>                    | 5,591,741   | <6,250,044>  | 189,788           | 2,501,763   |
|                            |           |           |                              |             |              |                   |             |
|                            |           |           |                              |             |              |                   |             |
| 42,768                     | 39,918    | <2,850>   | 446,296                      | 469,423     | 23,127       | 44,107            | 421,067     |
| 195,029                    | 165,969   | <29,060>  | 1,979,801                    | 1,706,526   | <273,275>    | 203,061           | 1,852,876   |
| 125,178                    | 76,634    | <48,544>  | 1,297,359                    | 818,934     | <478,425>    | 121,194           | 932,090     |
| 66,217                     | 42,601    | <23,616>  | 632,101                      | 452,182     | <179,919>    | 67,915            | 554,581     |
| 146,469                    | 119,545   | <26,924>  | 1,439,337                    | 1,237,995   | <201,342>    | 152,652           | 1,425,343   |
| 98,823                     | 101,503   | 2,680     | 970,070                      | 1,079,638   | 109,568      | 83,106            | 998,772     |
| 11,270                     | 25,088    | 13,819    | 125,270                      | 261,947     | 136,677      | 14,751            | 202,131     |
| 52,358                     | 62,929    | 10,571    | 582,153                      | 692,219     | 110,066      | 53,139            | 619,058     |
| 738,111                    | 634,187   | <103,924> | 7,472,386                    | 6,718,864   | <753,522>    | 739,924           | 7,005,918   |
|                            |           |           |                              |             |              |                   |             |
| <352,829>                  | 20,376    | <373,205> | <8,130,689>                  | <1,127,123> | <7,003,566>  | <550,137>         | <4,504,155> |



LICENSING & SERVICES  
INCOME STATEMENT

| JUN. 11(05/23/21-06/26/21) |         |          | FISCAL YEAR 20-21            |           |             | FISCAL YEAR 19-20 |           |
|----------------------------|---------|----------|------------------------------|-----------|-------------|-------------------|-----------|
| CURRENT MONTH              |         |          | YTD 11 MO(07/26/20-06/26/21) |           |             | LAST YEAR ACTUAL  |           |
| ACTUAL                     | BUDGET  | VARIANCE | ACTUAL                       | BUDGET    | VARIANCE    | MONTH             | YTD       |
| 25,873                     | 15,200  | 10,673   | 55,345                       | 169,890   | <114,545>   | 797               | 110,203   |
| 863                        | 0       | 863      | 37,795                       | 0         | 37,795      | 0                 | 0         |
| 26,735                     | 15,200  | 11,535   | 93,140                       | 169,890   | <76,750>    | 797               | 110,203   |
| 0                          | 304     | 304      | 890                          | 3,397     | 2,507       | 0                 | 1,579     |
| 26,735                     | 14,896  | 11,839   | 92,250                       | 166,493   | <74,243>    | 797               | 108,624   |
| 100.0                      | 98.0    | 2.0      | 99.0                         | 98.0      | 1.0         | 100.0             | 98.6      |
| 100.0                      | 98.0    | 2.0      | 99.6                         | 98.0      | 1.6         | 100.0             | 98.6      |
| 100.0                      | 0.0     | 100.0    | 98.2                         | 0.0       | 98.2        | 0.0               | 0.0       |
| 182,439                    | 152,771 | 29,668   | 2,052,484                    | 3,178,962 | <1,126,478> | 84,686            | 2,537,705 |
| 110,106                    | 132,353 | <22,247> | 1,216,235                    | 1,435,075 | <218,840>   | 113,539           | 1,327,599 |
| 18,011                     | 17,625  | 386      | 198,124                      | 193,875   | 4,249       | 17,625            | 193,875   |
| 310,556                    | 302,749 | 7,807    | 3,466,843                    | 4,807,912 | <1,341,069> | 215,849           | 4,059,179 |
| 337,291                    | 317,645 | 19,646   | 3,559,092                    | 4,974,405 | <1,415,313> | 216,647           | 4,167,803 |
|                            |         |          |                              |           |             |                   |           |
|                            |         |          |                              |           |             |                   |           |
| 46,238                     | 49,914  | 3,676    | 520,566                      | 549,054   | 28,488      | 46,238            | 520,639   |
| 0                          | 730     | 730      | 0                            | 7,655     | 7,655       | 551               | 9,188     |
| 46,238                     | 50,644  | 4,406    | 520,566                      | 556,709   | 36,143      | 46,789            | 529,826   |
| 173.0                      | 333.2   | 160.2    | 558.9                        | 327.7     | <231.2>     | 5,868.6           | 480.8     |
| 23,339                     | 23,794  | 455      | 256,037                      | 261,734   | 5,697       | 24,790            | 263,163   |
| 68                         | 317     | 249      | 588                          | 3,457     | 2,869       | 787               | 2,281     |
| 465                        | 475     | 10       | 4,981                        | 5,025     | 44          | 509               | 8,834     |
| 0                          | 205     | 205      | 30                           | 2,350     | 2,320       | 0                 | 2,131     |
| 1,480                      | 50      | <1,430>  | 12,696                       | 57,225    | 44,529      | 0                 | 40,325    |
| 0                          | 0       | 0        | 2,400                        | 0         | <2,400>     | 0                 | 0         |
| 0                          | 0       | 0        | 821                          | 0         | <821>       | 0                 | 0         |
| 1,333                      | 1,600   | 267      | 15,567                       | 22,600    | 7,033       | 0                 | 9,001     |
| 0                          | 1,550   | 1,550    | 50,420                       | 16,900    | <33,520>    | 0                 | 52,665    |
| 0                          | 0       | 0        | 0                            | 0         | 0           | 0                 | 1,129     |
| 3,200                      | 2,417   | <783>    | 40,200                       | 32,587    | <7,613>     | 16,000            | 25,385    |
| 0                          | 400     | 400      | 21,500                       | 4,400     | <17,100>    | 0                 | 0         |
| 981                        | 2,300   | 1,319    | 43,045                       | 26,732    | <16,313>    | 675               | 1,573     |
| 3,288                      | 0       | <3,288>  | 223,805                      | 395,107   | 171,302     | 3,432             | 251,538   |
| 16,345                     | 5,261   | <11,084> | 130,283                      | 168,065   | 37,782      | 6,606             | 171,530   |
| 65,198                     | 50,059  | <15,139> | 456,248                      | 764,725   | 308,477     | 0                 | 0         |
| 115,696                    | 88,428  | <27,268> | 1,258,620                    | 1,760,907 | 502,287     | 52,798            | 829,554   |
| 161,934                    | 139,072 | <22,862> | 1,779,186                    | 2,317,616 | 538,430     | 99,587            | 1,359,380 |
| 175,357                    | 178,573 | <3,216>  | 1,779,906                    | 2,656,789 | <876,883>   | 117,060           | 2,808,423 |
|                            |         |          |                              |           |             |                   |           |
|                            |         |          |                              |           |             |                   |           |
| 5,122                      | 3,845   | <1,277>  | 59,475                       | 47,524    | <11,951>    | 5,993             | 45,653    |
| 18,617                     | 11,833  | <6,784>  | 320,763                      | 184,574   | <136,189>   | 13,610            | 222,569   |
| 12,358                     | 5,995   | <6,363>  | 217,745                      | 97,243    | <120,502>   | 8,417             | 115,806   |
| 6,537                      | 3,332   | <3,205>  | 104,341                      | 52,945    | <51,396>    | 4,717             | 68,126    |
| 14,460                     | 9,352   | <5,108>  | 237,794                      | 146,112   | <91,682>    | 10,602            | 177,276   |
| 44,576                     | 45,711  | 1,136    | 437,562                      | 486,179   | 48,617      | 37,486            | 450,509   |
| 5,083                      | 11,313  | 6,230    | 56,504                       | 118,112   | 61,608      | 6,653             | 91,174    |
| 2,536                      | 4,268   | 1,732    | 28,362                       | 46,948    | 18,586      | 2,610             | 32,116    |
| 109,288                    | 95,649  | <13,639> | 1,462,547                    | 1,179,637 | <282,910>   | 90,089            | 1,203,229 |
| 66,069                     | 82,924  | <16,855> | 317,359                      | 1,477,152 | <1,159,793> | 26,971            | 1,605,194 |

UCLA STUDENT UNION  
INCOME STATEMENT

| JUN. 11(05/23/21-06/26/21) |           |          | FISCAL YEAR 20-21            |             |           | FISCAL YEAR 19-20 |             |
|----------------------------|-----------|----------|------------------------------|-------------|-----------|-------------------|-------------|
| CURRENT MONTH              |           |          | YTD 11 MO(07/26/20-06/26/21) |             |           | LAST YEAR ACTUAL  |             |
| ACTUAL                     | BUDGET    | VARIANCE | ACTUAL                       | BUDGET      | VARIANCE  | MONTH             | YTD         |
| 38,420                     | 95,847    | <57,427> | 250,868                      | 705,950     | <455,082> | <1,187>           | 381,524     |
| 11,299                     | 44,562    | <33,263> | 18,886                       | 434,512     | <415,626> | 1,100             | 248,538     |
| 0                          | 0         | 0        | 125,000                      | 0           | 125,000   | 0                 | 0           |
| 49,720                     | 140,409   | <90,689> | 394,754                      | 1,140,462   | <745,708> | <87>              | 630,062     |
| 11,604                     | 43,582    | 31,979   | 17,770                       | 424,952     | 407,182   | 1,100             | 244,642     |
| 14,134                     | 19,052    | 4,918    | 46,749                       | 161,311     | 114,562   | <120>             | 79,290      |
| 25,738                     | 62,634    | 36,896   | 64,519                       | 586,263     | 521,744   | 980               | 323,932     |
| 51.8                       | 44.6      | <7.2>    | 16.3                         | 51.4        | 35.1      | <1,133.0>         | 51.4        |
| 23,982                     | 77,775    | <53,793> | 330,235                      | 554,199     | <223,964> | <1,067>           | 306,129     |
| 48.2                       | 55.4      | <7.2>    | 83.7                         | 48.6        | 35.1      | 1,233.0           | 48.6        |
| 63.2                       | 80.1      | <16.9>   | 81.4                         | 77.2        | 4.2       | 89.9              | 79.2        |
| <2.7>                      | 2.2       | <4.9>    | 5.9                          | 2.2         | 3.7       | 0.0               | 1.6         |
| 1,250                      | 1,700     | <450>    | 7,125                        | 38,250      | <31,125>  | <345>             | 4,925       |
| 758                        | 10,415    | <9,657>  | 1,672                        | 219,522     | <217,850> | <1,202>           | 168,340     |
| 2,003                      | 8,255     | <6,252>  | 3,194                        | 81,226      | <78,033>  | 198               | 46,289      |
| 4,011                      | 20,370    | <16,359> | 11,991                       | 338,998     | <327,007> | <1,349>           | 219,554     |
| 27,993                     | 98,145    | <70,152> | 342,226                      | 893,197     | <550,971> | <2,416>           | 525,684     |
|                            |           |          |                              |             |           |                   |             |
|                            |           |          |                              |             |           |                   |             |
| 30,904                     | 34,841    | 3,937    | 383,212                      | 383,250     | 38        | 34,872            | 380,709     |
| 0                          | 0         | 0        | 0                            | 0           | 0         | 792               | 15,423      |
| 5,841                      | 26,915    | 21,074   | 98,271                       | 266,254     | 167,983   | 6,593             | 252,452     |
| 36,745                     | 61,756    | 25,011   | 481,484                      | 649,504     | 168,020   | 42,257            | 648,584     |
| 73.9                       | 44.0      | <29.9>   | 122.0                        | 57.0        | <65.0>    | <48,851.7>        | 102.9       |
| 18.3                       | 13.0      | <5.3>    | 47.7                         | 19.2        | <28.5>    | <978.7>           | 42.9        |
| 10,039                     | 17,545    | 7,506    | 176,709                      | 191,784     | 15,075    | 17,428            | 180,983     |
| 486                        | 720       | 234      | 6,160                        | 11,113      | 4,953     | 22                | 7,627       |
| 2,024                      | 2,972     | 948      | 23,408                       | 32,662      | 9,254     | 2,055             | 33,631      |
| 0                          | 0         | 0        | 3,523                        | 2,180       | <1,343>   | 0                 | 3,115       |
| 0                          | 3,254     | 3,254    | 0                            | 9,762       | 9,762     | 0                 | 3,411       |
| 0                          | 0         | <0>      | 2,067                        | 6,556       | 4,489     | 0                 | <672>       |
| 96                         | 0         | <96>     | 944                          | 6,000       | 5,056     | 0                 | 6,225       |
| 3,235                      | 12,718    | 9,483    | 18,046                       | 47,995      | 29,949    | 0                 | 41,527      |
| 355                        | 6,605     | 6,250    | <907>                        | 170,004     | 170,911   | <72>              | 127,718     |
| 0                          | 0         | 0        | 0                            | 1,740       | 1,740     | 0                 | 79          |
| 0                          | 0         | 0        | 0                            | 2,000       | 2,000     | 0                 | 1,400       |
| 0                          | 50        | 50       | 2,162                        | 5,214       | 3,052     | 0                 | 2,936       |
| 160                        | 250       | 90       | 1,721                        | 2,750       | 1,029     | 0                 | 2,759       |
| 1,974                      | 2,063     | 89       | 20,475                       | 35,705      | 15,230    | 2,770             | 23,743      |
| 145                        | 1,047     | 902      | 1,635                        | 10,211      | 8,576     | 131               | 7,144       |
| 0                          | 50        | 50       | 0                            | 550         | 550       | 0                 | <29>        |
| 0                          | 0         | 0        | 0                            | 2,890       | 2,890     | 0                 | 2,926       |
| 17                         | 0         | <17>     | 2,414                        | 0           | <2,414>   | 0                 | 30          |
| 6,083                      | 15,417    | 9,334    | 88,917                       | 169,587     | 80,670    | 15,417            | 169,583     |
| 2,515                      | 15,000    | 12,485   | 6,934                        | 139,750     | 132,816   | 0                 | 70,841      |
| 27,130                     | 77,691    | 50,561   | 354,208                      | 848,453     | 494,245   | 37,751            | 684,978     |
| 63,874                     | 139,447   | 75,573   | 835,691                      | 1,497,957   | 662,266   | 80,007            | 1,333,562   |
| <35,881>                   | <41,302>  | 5,421    | <493,465>                    | <604,760>   | 111,295   | <82,423>          | <807,878>   |
|                            |           |          |                              |             |           |                   |             |
| 4,071                      | 4,688     | 617      | 54,985                       | 55,262      | 277       | 5,412             | 54,969      |
| 2,966                      | 5,984     | 3,018    | 39,104                       | 54,833      | 15,729    | <90>              | 36,528      |
| 1,969                      | 3,031     | 1,062    | 26,476                       | 28,796      | 2,320     | <56>              | 18,043      |
| 1,041                      | 1,685     | 644      | 12,449                       | 15,762      | 3,313     | <31>              | 11,002      |
| 2,303                      | 4,729     | 2,426    | 29,479                       | 43,229      | 13,750    | <70>              | 28,916      |
| 54,057                     | 55,487    | 1,430    | 530,634                      | 590,189     | 59,556    | 45,459            | 546,334     |
| 6,164                      | 13,716    | 7,552    | 68,523                       | 143,204     | 74,681    | 8,069             | 110,567     |
| 21,425                     | 19,450    | <1,975>  | 245,896                      | 213,950     | <31,946>  | 23,457            | 259,828     |
| 93,996                     | 108,770   | 14,774   | 1,007,545                    | 1,145,225   | 137,680   | 82,149            | 1,066,187   |
| <129,878>                  | <150,072> | 20,194   | <1,501,010>                  | <1,749,985> | 248,975   | <164,573>         | <1,874,065> |

ADMINISTRATIVE AND SUPPORT SERVICES  
EXPENSE STATEMENT

| JUN. 11(05/23/21-06/26/21) |           |          | FISCAL YEAR 20-21            |             |           | FISCAL YEAR 19-20 |             |
|----------------------------|-----------|----------|------------------------------|-------------|-----------|-------------------|-------------|
| CURRENT MONTH              |           |          | YTD 11 MO(07/26/20-06/26/21) |             |           | LAST YEAR ACTUAL  |             |
| ACTUAL                     | BUDGET    | VARIANCE | ACTUAL                       | BUDGET      | VARIANCE  | MONTH             | YTD         |
| 364,363                    | 345,005   | <19,358> | 3,900,728                    | 3,794,500   | <106,228> | 338,912           | 3,861,665   |
| 0                          | 815       | 815      | 4,418                        | 8,965       | 4,547     | 0                 | 18,585      |
| 8,607                      | 38,666    | 30,059   | 111,091                      | 424,638     | 313,547   | 7,531             | 326,448     |
| 372,970                    | 384,486   | 11,516   | 4,016,237                    | 4,228,103   | 211,866   | 346,443           | 4,206,698   |
| 9.4                        | 6.1       | <3.3>    | 13.9                         | 6.2         | <7.7>     | 10.5              | 8.1         |
| 500                        | 0         | <500>    | 21,202                       | 13,779      | <7,423>   | 0                 | 18,958      |
| 0                          | 345       | 345      | 4,703                        | 10,160      | 5,457     | 0                 | 15,175      |
| 186,842                    | 168,848   | <17,994> | 1,962,986                    | 1,856,912   | <106,074> | 177,304           | 1,865,308   |
| 8,488                      | 14,826    | 6,338    | 39,469                       | 88,549      | 49,080    | 7,312             | 65,581      |
| 6,146                      | 6,850     | 704      | 62,277                       | 70,231      | 7,954     | 5,398             | 90,071      |
| 556                        | 704       | 148      | 4,679                        | 7,893       | 3,214     | 350               | 5,904       |
| 0                          | 3,665     | 3,665    | 2,251                        | 44,594      | 42,343    | 0                 | 12,055      |
| 56                         | 200       | 144      | 536                          | 2,200       | 1,664     | 0                 | 1,163       |
| 2,485                      | 2,653     | 168      | 10,246                       | 30,683      | 20,437    | 11,461            | 48,725      |
| 0                          | 1,000     | 1,000    | 0                            | 11,000      | 11,000    | 0                 | 0           |
| 6,000                      | 1,000     | <5,000>  | 9,245                        | 34,282      | 25,037    | 0                 | 500         |
| 0                          | 417       | 417      | 0                            | 4,583       | 4,583     | 0                 | 8,436       |
| 159                        | 320       | 161      | 4,616                        | 15,242      | 10,626    | 0                 | 10,434      |
| 0                          | 0         | 0        | 219                          | 0           | <219>     | 0                 | 209         |
| 0                          | 50        | 50       | 299                          | 550         | 251       | 0                 | 110         |
| 356                        | 475       | 119      | 4,090                        | 5,525       | 1,435     | 30                | 3,989       |
| 0                          | 75        | 75       | 0                            | 825         | 825       | 0                 | 0           |
| 849                        | 250       | <599>    | 3,745                        | 2,750       | <995>     | 348               | 3,024       |
| 955                        | <200>     | <1,155>  | 704                          | <2,900>     | <3,604>   | <33>              | 1,031       |
| 0                          | 100       | 100      | 3,349                        | 1,100       | <2,249>   | 0                 | 3,757       |
| 4,125                      | 2,500     | <1,625>  | 27,802                       | 27,500      | <302>     | 0                 | 25,422      |
| 1,006                      | 725       | <281>    | 12,265                       | 29,245      | 16,981    | 1,372             | 26,254      |
| 8,000                      | 100       | <7,900>  | 9,894                        | 10,900      | 1,006     | 0                 | 15,186      |
| 6,525                      | 7,870     | 1,345    | 74,397                       | 85,441      | 11,044    | 6,581             | 79,143      |
| 860                        | 1,149     | 289      | 10,431                       | 12,632      | 2,201     | 1,017             | 9,530       |
| 14,441                     | 16,792    | 2,351    | 158,211                      | 184,712     | 26,501    | 12,618            | 147,530     |
| 0                          | 186       | 186      | 0                            | 2,041       | 2,041     | 0                 | 0           |
| 500                        | 2,431     | 1,931    | 5,500                        | 34,478      | 28,978    | 500               | 27,686      |
| 0                          | 42        | 42       | 6                            | 457         | 452       | 0                 | 141         |
| 34,395                     | 25,367    | <9,028>  | 378,345                      | 279,037     | <99,308>  | 37,682            | 328,297     |
| 9,539                      | 10,813    | 1,274    | 169,682                      | 72,255      | <97,427>  | 17,400            | 184,363     |
| 1,188                      | 1,189     | 1        | 13,072                       | 13,071      | <1>       | 1,188             | 13,072      |
| 9,417                      | 9,417     | 0        | 121,083                      | 121,084     | 1         | 9,417             | 122,053     |
| 0                          | 3,000     | 3,000    | 1                            | 29,000      | 28,999    | 0                 | 26,527      |
| 8,358                      | 8,583     | 225      | 91,933                       | 94,413      | 2,480     | 8,358             | 91,933      |
| 3,476                      | 3,476     | 0        | 18,520                       | 18,520      | 0         | 0                 | 15,044      |
| 0                          | 722       | 722      | 10,139                       | 16,519      | 6,380     | 4,715             | 15,290      |
| 28,474                     | 0         | <28,474> | 291,464                      | 0           | <291,464> | 26,299            | 26,299      |
| 13,354                     | 20,600    | 7,246    | 129,170                      | 164,398     | 35,228    | 5,183             | 107,104     |
| 0                          | 500       | 500      | 1,000                        | 9,150       | 8,150     | 0                 | 6,223       |
| 2,703                      | 4,893     | 2,190    | 27,750                       | 46,748      | 18,998    | 2,331             | 34,523      |
| 177                        | 4,095     | 3,918    | 2,046                        | 45,170      | 43,124    | <7,200>           | 25,608      |
| 8,333                      | 14,917    | 6,584    | 91,663                       | 164,087     | 72,424    | 8,333             | 91,663      |
| 40                         | 0         | <40>     | 8,444                        | 0           | <8,444>   | <3,471>           | 20,140      |
| 4,575                      | 8,798     | 4,223    | 44,056                       | 96,385      | 52,329    | 4,442             | 52,871      |
| 8,158                      | 18,590    | 10,432   | 89,738                       | 204,483     | 114,745   | 18,589            | 204,479     |
| 309                        | 1,800     | 1,491    | 6,408                        | 33,100      | 26,692    | 0                 | 31,543      |
| 381,343                    | 370,133   | <11,210> | 3,927,637                    | 3,992,784   | 65,147    | 357,523           | 3,882,354   |
| 754,313                    | 754,619   | 306      | 7,943,873                    | 8,220,887   | 277,014   | 703,966           | 8,089,051   |
|                            |           |          |                              |             |           |                   |             |
|                            |           |          |                              |             |           |                   |             |
|                            |           |          |                              |             |           |                   |             |
| 23,640                     | 23,817    | 177      | 232,055                      | 253,327     | 21,272    | 19,880            | 238,921     |
| 2,696                      | 5,886     | 3,190    | 29,966                       | 61,458      | 31,492    | 3,529             | 48,353      |
| 18,022                     | 28,044    | 10,022   | 259,290                      | 308,484     | 49,194    | 27,145            | 281,912     |
| 44,357                     | 57,747    | 13,390   | 521,311                      | 623,269     | 101,958   | 50,554            | 569,185     |
| 798,671                    | 812,366   | 13,695   | 8,465,185                    | 8,844,156   | 378,972   | 754,520           | 8,658,237   |
|                            |           |          |                              |             |           |                   |             |
|                            |           |          |                              |             |           |                   |             |
| <712,853>                  | <726,596> | <13,743> | <7,530,990>                  | <7,885,590> | <354,600> | <669,278>         | <7,715,801> |
| <43,444>                   | <43,444>  | 0        | <473,727>                    | <473,727>   | 0         | <43,444>          | <473,727>   |
| <3,543>                    | <3,543>   | 0        | <42,562>                     | <42,562>    | 0         | <3,543>           | <42,562>    |
| <38,830>                   | <38,783>  | 47       | <417,905>                    | <442,277>   | <24,372>  | <38,255>          | <426,146>   |
| <798,671>                  | <812,366> | <13,695> | <8,465,184>                  | <8,844,156> | <378,972> | <754,520>         | <8,658,237> |
| 0                          | 0         | <0>      | 0                            | 0           | <0>       | 0                 | <0>         |

FACILITIES  
EXPENSE STATEMENT

| JUN. 11(05/23/21-06/26/21) |           |          | FISCAL YEAR 20-21            |             |           | FISCAL YEAR 19-20 |             |
|----------------------------|-----------|----------|------------------------------|-------------|-----------|-------------------|-------------|
| CURRENT MONTH              |           |          | YTD 11 MO(07/26/20-06/26/21) |             |           | LAST YEAR ACTUAL  |             |
| ACTUAL                     | BUDGET    | VARIANCE | ACTUAL                       | BUDGET      | VARIANCE  | MONTH             | YTD         |
| 150,280                    | 146,674   | <3,606>  | 1,483,994                    | 1,541,910   | 57,916    | 105,402           | 1,525,092   |
| 3,682                      | 9,575     | 5,893    | 51,616                       | 82,205      | 30,589    | 2,882             | 57,119      |
| 1,761                      | 970       | <791>    | 18,218                       | 11,638      | <6,580>   | 1,783             | 9,971       |
| <4,461>                    | <150>     | 4,311    | <6,231>                      | <1,950>     | 4,281     | <116>             | <8,933>     |
| <7,958>                    | <11,293>  | <3,335>  | <105,669>                    | <123,714>   | <18,045>  | <9,025>           | <123,941>   |
| 0                          | <2,500>   | <2,500>  | <7,265>                      | <27,500>    | <20,235>  | 0                 | <23,397>    |
| 143,303                    | 143,276   | <27>     | 1,434,662                    | 1,482,589   | 47,927    | 100,926           | 1,435,911   |
| 93,659                     | 89,130    | <4,529>  | 875,550                      | 924,964     | 49,414    | 75,233            | 899,481     |
| 176                        | 101       | <75>     | 1,624                        | 1,704       | 80        | 811               | 3,201       |
| 822                        | 768       | <54>     | 9,392                        | 8,128       | <1,264>   | 806               | 11,192      |
| 0                          | 0         | 0        | 200                          | 1,800       | 1,600     | 0                 | 6,054       |
| 8,000                      | 0         | <8,000>  | 8,000                        | 0           | <8,000>   | 0                 | 0           |
| 1,271                      | 5,758     | 4,487    | 16,171                       | 56,834      | 40,663    | 1,796             | 41,618      |
| 2.6                        | 4.1       | 1.5      | 4.1                          | 5.0         | 0.9       | <2,076.5>         | 6.6         |
| 1,744                      | 6,474     | 4,730    | 18,312                       | 65,359      | 47,047    | 1,373             | 50,032      |
| 275                        | 988       | 713      | 13,728                       | 14,995      | 1,267     | 5,553             | 21,009      |
| 398                        | 415       | 17       | 4,931                        | 6,703       | 1,772     | 553               | 5,285       |
| 36,185                     | 31,245    | <4,940>  | 262,316                      | 353,630     | 91,314    | 47,498            | 325,520     |
| 10,299                     | 4,150     | <6,149>  | 55,592                       | 48,650      | <6,942>   | 5,705             | 44,254      |
| 0                          | 400       | 400      | 3,275                        | 3,650       | 375       | 410               | 2,830       |
| <971>                      | 1,700     | 2,671    | 3,231                        | 18,700      | 15,469    | 290               | 15,135      |
| <406>                      | 300       | 706      | 22,207                       | 3,300       | <18,907>  | 0                 | 8,342       |
| 2,191                      | 3,075     | 884      | 37,855                       | 48,125      | 10,270    | 3,808             | 45,701      |
| 4,388                      | 11,087    | 6,699    | 35,435                       | 125,602     | 90,167    | 4,912             | 102,495     |
| 3,161                      | 3,247     | 86       | 45,081                       | 39,945      | <5,136>   | 3,161             | 47,428      |
| 0                          | 1,275     | 1,275    | 8,078                        | 14,025      | 5,947     | 400               | 14,331      |
| 0                          | 0         | 0        | 0                            | 0           | 0         | 0                 | 6,600       |
| 407                        | 0         | <407>    | 131,686                      | 0           | <131,686> | 2,601             | 10,136      |
| 161,597                    | 160,113   | <1,484>  | 1,552,666                    | 1,736,114   | 183,448   | 154,909           | 1,660,643   |
| 304,900                    | 303,389   | <1,511>  | 2,987,328                    | 3,218,703   | 231,375   | 255,835           | 3,096,554   |
|                            |           |          |                              |             |           |                   |             |
|                            |           |          |                              |             |           |                   |             |
|                            |           |          |                              |             |           |                   |             |
| 25,712                     | 34,167    | 8,455    | 272,789                      | 375,837     | 103,048   | 24,172            | 255,973     |
| 25,712                     | 34,167    | 8,455    | 272,789                      | 375,837     | 103,048   | 24,172            | 255,973     |
| 330,612                    | 337,556   | 6,944    | 3,260,117                    | 3,594,540   | 334,423   | 280,008           | 3,352,527   |
|                            |           |          |                              |             |           |                   |             |
| <284,475>                  | <292,094> | <7,619>  | <2,792,464>                  | <3,106,832> | <314,368> | <239,230>         | <2,875,088> |
| <8,946>                    | <8,946>   | 0        | <98,430>                     | <98,430>    | 0         | <8,946>           | <98,430>    |
| <3,497>                    | <3,497>   | 0        | <38,475>                     | <38,475>    | 0         | <3,497>           | <38,475>    |
| <10,054>                   | <9,202>   | 852      | <98,694>                     | <97,476>    | 1,218     | <8,455>           | <101,614>   |
| <23,640>                   | <23,817>  | <177>    | <232,055>                    | <253,327>   | <21,272>  | <19,880>          | <238,921>   |
| <330,612>                  | <337,556> | <6,944>  | <3,260,118>                  | <3,594,540> | <334,422> | <280,008>         | <3,352,527> |
|                            |           |          |                              |             |           |                   |             |
| <0>                        | 0         | 0        | <0>                          | 0           | 0         | 0                 | 0           |

UTILITIES  
EXPENSE STATEMENT

| JUN. 11(05/23/21-06/26/21) |          |          |                        |
|----------------------------|----------|----------|------------------------|
| CURRENT MONTH              |          |          |                        |
| ACTUAL                     | BUDGET   | VARIANCE |                        |
| 9,550                      | 12,602   | 3,052    | Chiller Water          |
| 23,048                     | 50,812   | 27,764   | Elec-Non Air Cond.     |
| 884                        | 9,836    | 8,952    | Water-Non Air Cond.    |
| 5,963                      | 5,353    | <610>    | Steam-Non Air Cond.    |
| 258                        | 3,917    | 3,659    | Gas                    |
| 0                          | 1,551    | 1,551    | Energy Management      |
| 39,703                     | 84,071   | 44,368   | TOTAL OTHER CONTROL.   |
| 39,703                     | 84,071   | 44,368   | TOTAL CONTROLLABLE EXP |
| <32,441>                   | <72,212> | <39,771> | Allocated-Svs and Ent  |
| <2,459>                    | <2,460>  | <1>      | Allocated-USAC         |
| <961>                      | <962>    | <1>      | Allocated-GSA          |
| <1,147>                    | <2,551>  | <1,404>  | Allocated-Comm Board   |
| <2,696>                    | <5,886>  | <3,190>  | Allocated-A & SS       |
| <39,703>                   | <84,071> | <44,368> | TOTAL OTHER            |
| 0                          | 0        | 0        | TOTAL EXPENSE          |

| FISCAL YEAR 20-21            |           |           | FISCAL YEAR 19-20 |           |
|------------------------------|-----------|-----------|-------------------|-----------|
| YTD 11 MO(07/26/20-06/26/21) |           |           | LAST YEAR ACTUAL  |           |
| ACTUAL                       | BUDGET    | VARIANCE  | MONTH             | YTD       |
| 73,986                       | 157,151   | 83,165    | 11,643            | 98,470    |
| 294,768                      | 520,825   | 226,057   | 27,860            | 431,029   |
| 19,676                       | 90,307    | 70,631    | 5,866             | 84,381    |
| 48,479                       | 57,448    | 8,969     | 5,224             | 54,990    |
| 4,042                        | 36,902    | 32,860    | 318               | 19,542    |
| 0                            | 17,061    | 17,061    | 0                 | 0         |
| 440,951                      | 879,694   | 438,743   | 50,911            | 688,412   |
| 440,951                      | 879,694   | 438,743   | 50,911            | 688,412   |
| <360,604>                    | <753,961> | <393,357> | <42,462>          | <581,859> |
| <27,057>                     | <27,060>  | <3>       | <2,459>           | <27,057>  |
| <10,579>                     | <10,582>  | <3>       | <961>             | <10,579>  |
| <12,745>                     | <26,634>  | <13,889>  | <1,501>           | <20,565>  |
| <29,966>                     | <61,457>  | <31,491>  | <3,529>           | <48,353>  |
| <440,951>                    | <879,694> | <438,743> | <50,911>          | <688,412> |
| <0>                          | 0         | 0         | 0                 | 0         |